

# WARANGA NEWS

Waranga News acknowledges the Traditional Owners and Custodians of the lands and waterways of our distribution area. We recognise their living cultures and ongoing connection to Country and pay our respects to their Elders past, present and emerging.

Published fortnightly since 1978

Serving Colbinabbin, Corop, Girgarre, Kyabram, Murchison, Nagambie, Rushworth, Stanhope, Tatura, & Toolleen

Print Post Approved PP1000007000

RRP \$2.00

A community newspaper  
staffed by volunteers

Thursday 18 July 2024

## Shears all sharpened for Kids' Cancer Research day

The sheep and shears are ready for the tenth annual 'Shearing for Kids with Cancer Day' coming up next week on Friday 26 July. The popular event is once again hosted by Katrina and Billy Ogden together with Bill and Val Barlow, whose shearing shed "Corydon" at Wanalta provides the venue.



A new banner marks the tenth birthday event. Donated by Rushworth & District Community Bank, it depicts scenes from past Shearing for Kids days. Holding the banner are Bank staff, Jahnae Parrish and Georgia Waters, Slim Perry, Katrina Ogden and Bill Ogden.

After ten years of successful fund-raising for the Royal Children's Hospital Oncology Unit it's clear that organisers (and shearers) have not run out of steam.

The main part of the day is structured around people and businesses within the sheep industry donating their time, skills,

products and services for one day's shearing. This year sixty sheep will be shorn on the day.

Throughout the day there will be entertainment to suit all age groups and lots of opportunities to donate, with food and drinks to purchase, raffle tickets to buy and, at the end of the day, the popular auction.

An added attraction this year will be the two volunteers, Declan and Kade, who have offered to shave their heads and donate their hair for Kids for Wigs.

For more about the 'Shearing for Kids' day turn to page 3.

Chris Bolton **BOLTON ESTATE AGENTS** 0413 092 698



# Rushworth Court House rejuvenation – first stage funded

After many years of neglect, the Rushworth Court House and surrounds is in the first stages of undergoing a rejuvenation thanks to a group of volunteers who would like to see this heritage listed historic building restored and utilised for the benefit of the community and as a potential tourist icon. The eventual aim is to get the building in good enough condition to be able to be used for exhibitions and other public events.

As part of the first steps in this process the Rushworth Historical Society has been successful in obtaining a \$4000 grant for the Campaspe Shire council to undertake a heritage assessment of the site.

The project will involve hiring a heritage specialist to conduct a site inspection and prepare an existing condition report and future recommendations for the repair of the former Rushworth Court House, police stables and portable lock-up. It will involve the heritage specialist visiting the site and undertaking a visual inspection of the building and preparing reference sketch plans and an existing condition report of all defects, complete with location, photographs, description of what is occurring, repair recommendations, priority and estimated cost.

From this inspection and report a complete picture of the requirements to revitalise the Rushworth Court House precinct will be known from which further funding can be applied for to undertake the work required.

This process is being done in conjunction with the Rushworth Community House who are currently the committee of management of the Rushworth Court House precinct and have agreed to add an extra \$500 for the heritage assessment.



The Rushworth Historical Society, Rushworth Court House committee and the Rushworth Community House would like to thank the Campaspe Shire Council for their

financial support for the rejuvenation of this important community asset.

**Nick Buzza**  
*Rushworth & District Historical Society*

## Rushworth Market

Village Green High st, Rushworth

Saturday 20 July

8.30am - 1pm

\*Trash 'n' Treasure/car boot \*Soaps \*Plants \*Dog treats \*Tools  
\*Crafts /Metal work \*Fruit & Veg \*Clothing \*Knitted items

NEW STALLHOLDERS WELCOME E: rushworthmarket@gmail.com P: 0459 520 843



<https://www.facebook.com/rushworthmarket>



**Helen Truran**  
**Marriage**  
**Celebrant**

Mobile: 0419 529 155

Phone: (03) 5826 2001

Email: [hjtruran@gmail.com](mailto:hjtruran@gmail.com)

**Ceremonies with compassion**



Got some news? Spread it around.  
[wnews@iinet.net.au](mailto:wnews@iinet.net.au)



## RUSHWORTH METRO FUEL

Oils, car accessories, food, drinks, snacks, bbq gas, fishing gear, ice and much more!  
American snacks and drinks.

Open 7 days - M - F 6am - 8pm W/Ends 7am - 7pm

22 High Street, Rushworth, 3612.

Ph: 5856 1548

## SOUTHERN PRIDE TRANSPORT

We provide transport services (45ft tautliner) in the local area including:

- WOOL CARTAGE
- BULK PALLETISED FEED, FERTILIZER AND MINERALS
- FROM/TO MELBOURNE AND GEELONG



CALL: RYAN HARDIMAN 0408 513 920

# Community Bank support for a great cause

Shearing for Kids with Cancer has been donated a colourful banner by Community Bank Rushworth & District to support the group's annual fund-raising event.

The banner, displaying images from past Shearing for Kids events, will be used at multiple events around the district highlighting the valuable fund-raising efforts of this group.

Branch Manager Alek Stokes said Shearing for Kids with Cancer is a group close to the hearts of the Board and staff at Community Bank Rushworth & District.

"We remain proud supporters of this wonderful cause and are hopeful that this year's event will be bigger and better than ever," Alek said.

Up to 80% of profits at Community Bank Rushworth & District are given to groups like this in our community. Community Bank Rushworth & District consider sponsorship and grant applications each month.

For more information about sponsorships



A new banner to enhance visibility and attract more donations!

and grants, contact Local Engagement and Marketing Manager Charleen Warburton on 0408 572 808 during business hours or head to [communitybankrushworth.smartygrants.com.au](http://communitybankrushworth.smartygrants.com.au) to apply.

# Seniors Program Grants now open

Campaspe Shire Council's Seniors Program Grants aim to increase health, wellbeing and social connection amongst seniors, through funding of concepts that promote positive ageing and are inclusive and accessible.

The annual grant program is now open and calls for applications for community programs that foster social connection and participation. Funds of up to \$1,000 are eligible for projects, events or activities.

"As always, we're asking applicants to think of new and creative ways to engage with our senior residents through new experiences or supporting seniors in developing new skills," said Mayor Cr Rob Amos.

The program is an opportunity for not-for-profit community groups, organisations and clubs to fund a seniors focused event, program or activity.

"We're keen to see the ideas you come up with and look forward to the innovative projects that effectively address social isolation for seniors," Cr Amos said.

Council is especially looking to fund projects that encourage residents from the nine groups of priority identified in its Access and Inclusion Strategy which can be accessed on the Shire of Campaspe website.

If you have an idea that will make a positive impact on our seniors community you can submit your application using the Seniors Program Grant application form. It can be handwritten or entered online at [www.campaspe.vic.gov.au/grants](http://www.campaspe.vic.gov.au/grants).

Applications close Friday, 9 August. Successful applicants are expected to be announced on Friday, 6 September.

**If you require assistance in writing your application, contact Council's Community Development Team on 5481 2200.**

# Fun-filled day planned

It will be all-day entertainment for adults and kids alike at Shearing for Kids day at Wanalta on Friday 26 July.

The serious business of shearing will be the focus for the adults until midday, but the attraction of the jumping castle and face-painting might win the day for most of the kids. Access to these are on display of their \$10 wrist bands.

Lunch will be served for 11.30 am, with the following on the menu to warm you up:

**Roast meat and gravy rolls \$5.**

**Cup of Soup \$3.**

**Sausages \$2.**

**Hamburgers \$3.**

**(Coleslaw and onion available too!)**

At 2 pm Declan and Kade will defy our chilly winter and lose their locks for a good cause.

To round off the day there will be an auction of must-have items and then the raffle will be drawn. (If you can't make it on the day raffle tickets can be purchased from Katrina Ogden on - 0439 720 938).

The funds raised on the day will go towards money for clinical research and medical equipment, as well as supporting families of children with cancer.

## Account details for donations:

**Name: Shearing for Kids with Cancer**

**BSB: 633 000**

**ACC NUMBER: 160 489 068.**

**For any further information**

**call Katrina on 0439 720 938.**

**STEVIE'S**  
GARDENING &  
MAINTENANCE  
SERVICE

**0432 184 360**

PROVIDING HIGH QUALITY LEGAL SERVICES THROUGHOUT  
THE GOULBURN VALLEY AND RIVERINA SINCE 1890

**Dawes & Vary Riordan offers a full range of legal services**

- Property, Planning & Construction
- Wills & Powers of Attorney
- Succession Planning
- Deceased Estates
- Agribusiness
- Corporate & Commercial
- Litigation & Dispute Resolution
- Property Division (Matrimonial and De facto)
- Childrens Matters
- TAC Claims / Injury Law

**DAWES & VARY RIORDAN | LAWYERS**

TATURA: 03 5824 0300
SHEPPARTON: 03 5820 0200
[www.dvrlawyers.com.au](http://www.dvrlawyers.com.au)

**GUS &  
OLLIES**

Open Thursday to Monday.  
p: +61 (0) 481 386 981  
e: [shop@gusandollies.com.au](mailto:shop@gusandollies.com.au)



# Have your say!

Readers are invited to contribute their letters, opinion pieces and ideas to these pages.

## Thanks for a unique community event

The Op Shop and Foodbank volunteers were privileged to be part of a unique community event last Saturday, the Rushworth Lantern Festival organised by The Rushworth Theatre Group. On behalf of Rushworth Community Support who manage the Op Shop and Foodbank I would like to thank Julie Beer and her fellow group members for a fun event that brought together a number of local community groups.

The Foodbank involvement was soup-making, we had been asked to provide 'a mug of hot soup', to fuel the cold singers and lantern bearers after they had walked down the hill from St Paul's churchyard to the Aged Care Hostel to sing a selection of well-known tunes to the residents. Foodbank volunteers had used the Band Room kitchen to make three pots of hearty vegetable and pumpkin soup, transported to St Paul's kitchen in anticipation of the hungry walkers.

Earlier in the week the Rushworth Art Depot had hosted a 'make your lantern' session at their new home, adults and children alike excitedly glued and painted lanterns for use on the night.

Luckily, the weather held, despite rain clouds later in the day revealing a cold and calm evening as the 'lanterneers' set off down the High Street hill. On their return a queue formed outside the kitchen as soup and rolls were handed out. At this point I would like to thank the very generous people who contributed to the Foodbank funds by leaving a gold coin donation.

The participants brought their chairs and rugs, the outside braziers were lit and the entertainment for the evening began with a shadow puppet play on a huge, erected screen.

The Siberian Folk tale of 'The Reindeer Maiden' was beautifully re-enacted by the Theatre Group. A spell-binding experience for both adults and children with songs and actions by members of the group and music by Angie Russi.

After the play, many younger members of the group and their parents headed home leaving a fireside circle of music makers and listeners to while away the winter evening with laughter and folk songs.

As well as the community groups that put together this event, thanks go to the Rushworth and District Community Bank who contributed financially to the evening and the Community House who auspiced the event.

A special evening demonstrating how the community can get together provide a warm and welcoming winter event that I would love to see become a fixture in our town's calendar. Thank you to Julie and your team.

**Tina Hanigan**  
Rushworth Community Support

## Single lane bridge - Vic Parliament response

Readers may remember my opinion piece in the Waranga News edition of 23 May, in which I presented my thoughts about the dangers posed by the current single lane crossing over the Waranga Basin Western Outlet. That article included a preliminary analysis of the faults inherent in the current approach to risk mitigation - 30km/h speed limits for more than half a kilometre - and described several everyday scenarios in which great risk attaches to traffic flow over the crossing and on its approaches.

As reported in the last edition of the Waranga News, my opinion piece was read by the Member for Shepparton in the Victorian Parliament Upper House, Mrs Rikkie-Lee Tyrrell MLC.

Mrs Tyrrell was moved to raise the issue of the crossing in the Parliament, posing a question based on the article to the Minister of Roads and Road Safety, Hon Melissa Horne MP.

On 19 June, Mrs Tyrrell asked: "My question is for the Minister for Roads and Road Safety.

"For many years constituents who travel the Rushworth-Tatura Road have been faced with the dangers of a one-lane bridge that crosses over the Waranga Basin Western Channel. The crossing sits atop the outflow gates for the basin and has been in desperate need of replacement since the days of the Kirner government.

"So far the best solution the government has is to lower the speed to 30 kilometres per hour. This lower speed limit has unfortunately resulted in a number of near misses and collisions, and sadly, the bridge was the location of a fatal motorcycle collision in 2023.

"The dangerous conditions of this crossing are often exacerbated by the heavy rain, fog and sometimes even smoke in the event of grassfires in the area. This crossing carries everything from cars to trucks, school buses and pushbikes from one side to the other multiple times a day. The pavement is uneven and broken, and the guardrails are flimsy.

"The question that my constituents want to ask is: will the minister commit to consulting with the local community on how this crossing can be improved for the safety of all road users?"

### Ministerial response

Three weeks after the question was asked in the Parliament, Mrs

Tyrrell received the following written response from the Minister:

"Answered: 10 July.

"The Rushworth-Tatura Road narrows to a single lane to allow motorists to use the Goulburn Murray Water structure to cross the Waranga Western Main Channel. This important piece of infrastructure has continued to provide irrigation water to vast parts of Victoria while enabling a road connection for over 100 years.

"Goulburn Murray Water (GMW) are (sic) the responsible authority for the irrigation structure. The Department of Transport & Planning (DTP) will commit to working with GMW when it is determined that the irrigation structure can no longer facilitate traffic movements. At such time, DTP will ensure that any replacement structure meets the traffic demands for all road users in the safest manner possible.

"In the interim, DTP officers will undertake a site inspection to ensure that all the regulatory and warning signage and line marking meets the respective standards.

### Personal reaction

I personally found the Minister's response to be disappointing. It did not respond in any way to the key question "will the minister commit to consulting with the local community on how this crossing can be improved for the safety of all road users?"

The response also avoids the issue of the current poor state of the Rushworth-Tatura Road and the specific risk factors associated with the outlet crossing. Instead, it talks about "(T)his important piece of infrastructure has continued to provide irrigation water to vast parts of Victoria while enabling a road connection for over 100 years" and cites GMW as "the responsible authority".

The Minister's added comment that the Department of Transport & Planning (DTP) "will commit to working with GMW *when it is determined that the irrigation structure can no longer facilitate traffic movements*" is very strange, given that people have been killed and injured at the crossing for many years and there is bidirectional disruption to the hundreds of vehicles that use it each day.

Playing GMW off against the various state roads authorities to defer making a decision about the

crossing has been strategy that has been used by governments for decades.

The Minister's response also ignores the fact that the crossing *is already unsafe* - it does not require a joint GMW and DTP working group to address the problem "when it is determined that the irrigation structure can no longer facilitate traffic movements".

Importantly, it is also possible that talk of GMW and DTP eventually "working together" to come up with a solution to "traffic movements" while sidestepping the immediate, critical issue of human safety may abrogate ministerial responsibility, given that one of the Minister's many portfolios is *Roads and Road Safety*.

Having alerted the government to our fears, if a significant accident was to occur on the crossing over coming months, as a community we should not let responsibility be confined solely to the vehicles involved.

### Acting responsibly

A single-lane bridge for northbound traffic plus a low-cost modification to the GMW crossing for southbound traffic was proposed by the Kirner Government in the 1980's. When funding was withdrawn, the proposal stalled and nothing has happened since.

What is needed is a new dual-lane road bridge that is relatively close to - *but wholly independent of* - the Waranga Basin outlet control facilities. This problem is squarely in the court of the Department of Transport and Planning. It has little to do with GMW, except perhaps as interested onlookers. To suggest otherwise is to perpetuate a myth and give credence to an excuse that has already been purveyed for far too long.

I have asked our Members of Parliament to pursue this issue on behalf of Rushworth residents and others who use the Rushworth-Tatura Road, and who therefore face the risks associated with the current hundred year old Waranga Western Channel Outlet crossing.

This is not an issue that should be allowed to slide back into obscurity once again, and I'm grateful to Mrs Tyrrell and our other parliamentary representatives who are acting on our behalf to ensure that it does not.

**Cass Alexander**  
Rushworth

# Rushworth roadside and bush clean up

Are you sick of seeing piles of rubbish in the bush and on the roadside every time you are out and about?

On Saturday 27 July and Sunday 28 July, the Wildflower Hunt Committee in conjunction with the Waranga Catchment Landcare Collective will facilitate the clean up of roadside and bush rubbish in the Rushworth area.

The roadside clean up will take place along the Tatura Road from Perry Road to the golf course on the Saturday. This will be followed up by a bush clean up on the Sunday where we will go to places in the surrounding bush of Rushworth and remove rubbish from areas where it has been dumped.

So if you would like to give a helping hand we will be meeting in front of the Motofinish Café at 9am on Saturday 27 July for the roadside clean up and 10am on Sunday 28 July for the bush clean up. Each clean up activity should only take two hours at the most.

Participants will be provided with all safety equipment necessary for the task but should bring their own water bottle and wear sturdy shoes and appropriate clothing for the weather.

Afterwards lunch will be provided at the Motofinish Café.

Contact Nick Buzza on 0423 658 245 for further details.



A team of workers after a job well done. An even larger team will make shorter work of cleaning up Rushworth.

**Motofinish Café**  
 Locally Blended Coffee  
 Wholesome Home-cooked Meals & Snacks  
 Available for Functions, Birthday parties & Meetings  
**Open Wed to Sat 9am - 4pm**  
**Sun 10am - 4pm**  
**27 High Street, Rushworth**  
 Come for a ride and enjoy our home cooked goodies  
 Bookings: Fiona 0438 018 192

COLBINABBIN  
**GENERAL STORE**  
 CO-OP

PHONE: 5441 5807      SMS FOOD ORDERS: 0472 569 208

AUSTRALIA POST  
 HOURS: 8.30am - 4pm, Mon- Fri  
 BANKING: @post bill pay - cheque & cash deposit  
 withdrawals - Money orders - Western Union  
 Stocking a wider range of post packaging for all of your  
 business needs - Parcel pick up any time during shop  
 hours - Phone recharge vouchers

SHOP HOURS: 7am - 5pm, Mon - Fri | 8am - 2pm, Sat - Sun  
 BREAD DELIVERY: Mon - Wed - Fri  
 FRUIT & VEG DELIVERY: Wed - Fri  
 MEAT DELIVERIES: Fri order by 3pm Thu

**"We pride ourselves on good old fashioned service"**

Mechanical Services & repairs  
 • SG Fleet authorised repairer  
 • Licensed roadworthy car & motorbike tester  
 • Pick up & drop back service Monday and Friday within a 100km radius  
 • New tyres, wheel alignments & puncture repairs  
 • 24hr car wash & vacuum  
 • LP gas bottle refills  
 • Spare parts  
 • New batteries  
 • Fishing licenses

sgfleet Monday to Friday 8am - 5.30pm  
 Saturday 8am - 12noon  
 Proprietor - Glenn McPherson

**MURCHISON SERVICE STATION**  
 25 STEVENSON ST 5826 2443

Like us on Facebook - Murchison Service Station

**OUR FRIENDLY STAFF LOOK FORWARD TO SERVING YOU!**

Check out our weekly and monthly specials on:  
**GROCERIES    FRUIT & VEG    DELI**  
**DAIRY & FREEZER    MEAT    LIQUOR**

Free Home Delivery:  
**Monday, Tuesday and Thursday Only - cut off time 12pm**  
**Phone : 5856 1441**

**COGHLAN'S IGA plus LIQUOR**

Open 9am to 5pm on Sundays!



# Keeping fire safe in winter

On average, there are 3,000 house fires in Victoria each year. Most could be prevented by taking simple precautions. CFA Community Engagement Coordinator for the north-west region offers the following tips.

## Kitchen

The most common place in the home where fires start is the kitchen. Many kitchen fires are caused by cooking that has been left unattended. Others are caused by electrical faults and flammable items like paper towels and curtains that are too close to sources of heat like the stove or toaster. If the cooking area is not kept clean a fire that starts on the stove can very quickly spread to built-up grease and fat around the stove and range hood, with the fire travelling up into the roof and to the rest of the house.

## Sleeping areas

Many fires that result in people dying start in bedrooms or lounge areas. Often this is due to improper use of electrical appliances or home heating. Electrical items in the home can include the power supply, fixed or portable appliances, power boards and extension leads.

## Heating

During the colder months we see an increase in the use of heating appliances, gas and electric. If you bring a portable heater into

a bedroom be sure that it is well away from things that can burn, like clothing, bedding and curtains and always turn it off when you get into bed or leave the house.

If you're drying clothes in front of a heater of any kind, always keep them at least a metre from the heater.

## Outdoor heating - fire pits

If you are using a fire pit to stay warm outdoors it is important to never leave it unattended, watch children around fire at all times, and put the fire out with water when finished. Remember to drink alcohol responsibly around fire to reduce the chance of injury to yourself and others.

## Powerboards

Sometimes there are not enough power outlets for all our devices. Power boards are becoming more common than ever. It's important to remember that power boards are only meant to be temporary and they shouldn't be a permanent fixture in your home.

Power boards can only take a limited number of devices so only plug in one device

per outlet. Never plug double adapters or extra power boards into a power board and don't plug high powered appliances like heaters into a power board or extension lead. Doing so can cause the power board or extension lead to heat up and start a fire.

## Top home fire safety tips

- Book a licensed gas-fitter to check your gas heater
- Check chimneys, flues and fire boxes for cracks, rust and debris
- Check electric blankets for kinks in the wiring
- Clean the lint filter in your dryer (and continue to do this after every use)
- Check appliances for visibly frayed or damaged wiring
- Complete the Home Fire Safety Checklist to see if you've done everything you can to protect you and your family.
- Prepare a home fire escape plan and practice escaping quickly and safely.

# History grants to return

Both the Victorian Community History Awards and Local History Grants Program will open once again this year, with all historical societies encouraged to prepare an application.

Member for Euroa, Annabelle Cleeland said the funding allocation is critical to the ongoing growth and digitisation of the State's archives and supports countless community volunteer historical societies, who contribute thousands of hours to build and maintain community-based archives.

Ms Cleeland praised the special work that historical societies were doing across the region, noting that historical societies are an essential part of our regional communities.

"The volunteer-led organisations keep detailed archives of their region, maintaining extensive collections of local artefacts and information, showcasing our local history," she said.

"The funding allocation was critical to the ongoing growth and digitisation of the State's archives and has supported countless community volunteer historical societies, who contribute thousands of hours for the benefit of their local towns."

The grants have proven to be very popular locally, with the Euroa Historical Genealogical Society receiving \$670 for the preservation of

collections at the Farmers Arms Museum in this past year's program.

The previous year, the Nagambie Historical Society received \$6,302 for the digitisation of their workstation, while the Seymour and District Historical Society received \$11,509 for the digitisation of their collections.

Any organisation looking to apply can contact Ms Cleeland's office for a letter of support.

You can visit <https://prov.vic.gov.au/> for details of Local History Grants Program recipients and past Victorian Community History Awards winners.



- Fully equipped workshop
- Auto parts
- Towing
- 24hr Roadside assistance and recovery
- Trailer Hire
- Courtesy Vehicles
- Tyres repairs
- Tyre & Wheel alignments

2 Williams Street (cnr Ross St),  
TATURA

Mobile: 0400 681 819

BH: 5824 1428

motormobile@bigpond.com

COVERING ALL OF YOUR PLUMBING NEEDS  
FOR HOME AND BUSINESS. SPECIALISING  
IN MAINTENANCE AND IMPROVEMENTS.

LEAKS • BLOCKAGES • RENOVATIONS  
GAS FITTING • TAPS • TOILETS

LIPSHUT  
PLUMBING  
& GAS FITTING

🔧 DAMIEN LIPSHUT

📞 0499090924 - CALL ME TODAY

✉️ DAMIEN@LIPSHUTPLUMBING.COM.AU





# Police Beat

**Greetings and welcome to your local police report for the Rushworth Police Service Area, for the month of June 2024.**

The following is a list of reported crimes. Any information in relation to these crimes can be reported to the Rushworth Police Station on 58561000, or by calling Crime Stoppers on 1800333000 if you wish to remain anonymous. Any information is greatly appreciated by both victims and police.

A theft from motor vehicle occurred in Gamble Court Colbinabbin at approximately 4.30am on 11/06/24. A wallet was stolen from an unlocked vehicle at the property. This is a timely reminder to always lock your vehicles and never leave valuables inside.

A theft of a farm gate occurred during the day on 13/06/24 at a Middle Road Rushworth property. A chain was cut, and the gate removed by the offender. Please report any suspicious activity. We are more than happy to check on properties and people.

A burglary occurred during the day on 14/06/24 at a Telemetry Tower within the Whroo Nature Reserve. The location off Le Deux Road had the fence cut and then padlocks also cut to the door. A large amount of scientific equipment was stolen including batteries, cables, solar panels, and sensor cameras valued at \$15000.

Several scams were also reported to the station. Please never give out your bank details over the phone. Unfortunately, these scams often originate overseas and the chance of recovering your money is unlikely.

Local members also attended three family violence incidents during the month.

This is our list of reported crimes and issues. Now on to other matters of local interest. Local members issued 51 infringement notices for the month. I must sound like a broken record to regular readers. Speeding offences again led the way. Two drivers were located driving whilst under the influence of drugs. Two drivers were located drink driving. All these drivers can expect to be off the road for long periods to come.

We also have a local traffic operation running during July. Operation Mustang will target driver distraction by enforcing mobile phones, seatbelt, and parking offences. You heard it here first so I'm sure no readers will receive an infringement.

The coffee with a cop event was held at the library during the month. Many thanks to the staff for putting on the event for us. It was a lovely morning tea with a few locals. I also caught up with Nat at the Colbinabbin Store for a coffee recently. It was a great coffee so please pop in and support the store when you can.

Well, that about wraps up another police report. Please stay safe and continue to look after each other. Until we chat again.

*All the best,  
Ldg. Sen. Cons Steve Thomson  
Rushworth Police*

**SHEARING FOR KIDS  
FRIDAY 26 JULY  
7.30 AM - 4 PM  
AT  
CORYDON,  
3380 BENDIGO-MURCHISON RD  
WANALTA**

**Sam  
BIRRELL MP**

FEDERAL MEMBER FOR NICHOLLS

**THE NATIONALS**  
*for Regional Australia*



## Production Plunges Under Plibersek

In an act of national self-harm, in the coming days the Albanese government will put tenders out to buy out irrigation water entitlements from basin communities. What we had feared for so long will now become a reality.



The livelihoods of basin communities will be severely impacted, and the nation's ability to grow its own food will be diminished. The tragedy of this is that it is based on politics, not science. There was an understanding that any water buybacks would come from river diverters but now we see the Commonwealth trying to buy water out of irrigation networks which threatens the viability of the entire system. This policy is another example of the Albanese government's total disregard for agriculture in Australia. They deserve to be turfed out at the next election for their attack of Australia's farmers and economy.

## Fix Our Roads – Have Your Say

Drivers across our electorate spend hours every week dodging potholes, reducing speeds on rough surfaces and too many people have had to replace their tyres. Within the first two years of the Albanese Labor Government, \$27.9 billion



worth of infrastructure projects have been cancelled, cut and delayed leaving local roads in desperate need of upgrades and repairs. So I'm calling on residents to nominate a road or intersection in need of upgrades by completing a national road survey which you can find on my website. Our region is an agricultural and transport hub and quality roads are key to that - it's time the Labor Government invest in the industries that support thousands of jobs and drive Australia's economy. Drivers deserve better, safer roads and I will continue to demand our roads be funded, repaired and upgraded. Head to my website and have your say on a road near you.

Don't hesitate to reach out to my office if you require help with Federal Government matters.

426 Wyndham Street, Shepparton VIC 3630

(03) 5821 5371

sam.birrell.mp@aph.gov.au

sambirrell.com.au

Authorised by Sam Birrell MP, National Party of Australia,  
426 Wyndham Street, Shepparton VIC 3630.





# Arts & Tourism

Places to stay, things to do and see in our district

This page is proudly sponsored by:



[www.kennedyvintners.com.au](http://www.kennedyvintners.com.au)

## Basket weaving in all shapes and sizes

The Rushworth ART Depot was abuzz with ten enthusiastic students on Saturday. They were there to learn basket weaving, in a class run by ex-Rushworth resident Tony Ford. Tony learnt the skill from Dja Dja Wurrung Elder and master weaver, Aunty Marilyn Nicholls. She is related to the well known Pastor Sir Douglas Nicholls, who was famous for many things. The AFL Indigenous Round of footy is named after him.

One of the styles of weaving taught in the class was probably used by the Ngurai-illum Wurrung people before colonisation in the Waranga area. Some of the plants found in the Rushworth forest are suitable for basket weaving, such as black anther flax lily and lomandra, although this class used raffia as it is easier for beginners to work with.



As well as doing the weaving, participants engaged in many lively conversations, particularly about Aboriginal history of the area. Many of these stories surfaced when Tony was writing the Waranga Dreaming column for the Waranga News a few years ago.

Proceeds from the day have been donated to BoHollow Wildlife Rescue. Aunty Marilyn has explained that it would be inappropriate to profit from any weaving done in the local style, suggesting that any resulting baskets should be gifted. Similarly, the course fees were given to a worthy cause, one that assists the totems of the original custodians of the area that we now refer to as Waranga.

There was a waiting list for this class, so it is likely that another class will be offered by the ART Depot, probably in September.

The facilities of the former Senior Citizens Clubrooms, which are now home to the ART Depot are perfect for this the type of class that was run on Saturday. Much warmer and more comfortable than the open shed at the former site.

## Nature buddies school holiday fun

Gumnuts, banksia nuts, seedpods and all manner of treasures from nature came to life in Find Your Feathers workshop during the school holidays at the Rushworth ART Depot. See some great examples below.



Below: Frankie shows off some of her 365 artworks which will be at the exhibition.

## Frankie O' exhibition in Bendigo

Bendigo colour legend, Frankie O, is exploding Dudley House with 365 artworks of Bendigo. In an earlier life Frankie was art teacher at Rushworth P-12 College.

The Exhibition 'One Drawing a Day BENDIGO' features all 365 artworks from her latest year long daily drawing challenge. Her work powerfully visualises Bendigo in a new contemporary light. Taking it's architectural grandeur, Chinese heritage and gold rush history to a new and unbelievably exciting level.

Frankie's year long project spans a range of practices including painting, sculpture, digital drawing, collage, ceramics and mixed media. They are each, an interpretive expression of a day or a place in Bendigo, reflecting her diversity as a creative and her love for the city she lives in.

In a dynamic presentation installed in Dudley house, the exhibition includes works as small as 10x10cm and as large as 90cm x 120cm, works displayed in bell jars and stretched out in hand made concertinaed journals

One Drawing a Day BENDIGO will be on View at Dudley House, 60 View Street Bendigo from the 19 July to the 30 July 2024. Opening night 19 July at 5.30pm

It is the third year long daily drawing Frankie O has completed. The first 'One Drawing a Day by Frankie O' in 2016 and the second 'One Digital Drawing a Day' in 2018. She hopes the fourth might be in Italy.



Kennedy Shiraz 2019, Kennedy Cambria (Reserve) 2014, Kennedy Pink Hills Rosé 2021, Henrietta Shiraz 2020  
Henrietta Rose 2022 available online and being served at Colbinabbin Country Hotel.



# Murchison Rail Trail: Timber bridge renewal works complete

Greater Shepparton City Council has announced the completion of repair works to the Murchison Rail Trail bridge.

The essential maintenance and repair works have restored the timber piles which had suffered significant erosion over time, to ensure the bridge can be used and enjoyed for many years to come.

The works, undertaken during May and June included:

- Timber pile repairs including pile ‘wrap and pour’, and splicing new timber sections into existing
- Supplying and replacing timber cross-heads, bolts and fixtures
- Applying timber preservation treatments and associated works
- Reinstatement of fencing around the site.

The completion of these restoration works ensures compliance and safety for all user groups, including pedestrians and cyclists, and ensures the rich history of the bridge is preserved for future generations.



The completed project.



Crosshead before.



New pier foundations underway.



Pier repaired and drying



Restoration in process.



Part of the badly damaged pier.



Rail trail pathway that leads onto the bridge.

**Roogenic Teas 10% off**

Open: Thurs 1-5, Fri 9-5, Sat/Sun 10-3,  
Monday 9-1  
21 High St Rushworth  
“More than just balloons”  
Phone: 0418 571 673 Bruce & Gwen

**Annabelle** Member for *Euroa*  
**CLEELAND MP**  
03 5762 1600 | [annabellecleeland.com.au](http://annabellecleeland.com.au)

**Proudly supporting the local community**



**Around our towns Around our towns Around our towns Around our towns Around our towns**

# Northern Nacula island wedding

North of Fiji are the pristine, undeniably beautiful turquoise waters and islands of the Yasawa, with coral reefs home to a vast number of fascinating and striking marine creatures and postcard perfect beaches.



**Lydia from Colbinabbin and Williame from Naisisili - married on traditional style in the village church on the island.**

On the northern Nacula island is a Fijian village, called Naisisili (similar in size to Colbo) which is where a traditional Fijian wedding was held on 11 July between Williame, who was raised on the island, and Lydia (née Clohesy, daughter of Pauline McTaggart and and Phil Clohesy) from Colbinabbin.

The wedding was held in the village church, and was followed by a local Fijian buffet at the Community Hall, where the locals and visitors (friends and family from Australia including Colbinabbin and abroad) enjoyed a meal, speeches, and music.

In the evening, the celebrations moved to a local resort hall, where a very talented Fijian band found the perfect mix of Fijian and western cover songs, and had everyone up dancing, locals and visitors alike.

Apparently this was not

too dissimilar to many Colbo weddings, with the show of high quality and unique dance moves, dancing on the bar, and guests joining the stage with the band,

attempting their best vocals! Lydia and Williame reside in Hong Kong and we wish them all the best in their future together.



## Around Rushworth

### Congratulations . . .

. . . to Julie Beer and all the talented people who presented the wonderful lantern spectacular on Saturday evening. The event was a celebration of creativity and reminds us that the best bits of community life come from working together – ‘grass-roots’ inspiration and collaboration!

### NBN goes to the tower



If your internet wasn't working on Tuesday you might be wondering why. That would probably be because nbnco was in town connecting up to the tower at the golf course.

## HairZone

8 Birdwood Avenue, Stanhope

### Ladies' & Men's Hairdressing

- Fashion Cuts, Colour and Foils
- Perming • Long Hair Styling
- Eyelash and Brow Tinting
- Long Hair Styling for Special Occasions
- Facial Waxing

Opening Tuesday to Friday (late Thursday nights)

Phone Melinda for an appointment  
5857 2264

## Library & Information Week

At Rushworth Library  
33 High Street



Activity	Detail	Date & time	Booking
Scrabble	Meet up & enjoy a friendly game of Scrabble. <i>Every Monday</i>	Monday, 29 July 10.30am	All Welcome
Drop in Tech Help	Bring your mobile device or tech question and we will try to help you. <i>Every Monday</i>	Monday, 29 July 2 - 3pm	All Welcome
Lego Play	Drop in after school and construct colorful designs from a great variety of LEGO bricks. <i>Every Tuesday during the school term</i>	Tuesday, 30 July 3.30 - 4.30pm	All Welcome
Cards	Play a game of cards with a friendly group. <i>Every Thursday</i>	Thursday, 1 August 10.30am	All Welcome
Craft & Chat	Bring your knitting, crochet or craft and enjoy the company and fun! <i>Every Thursday</i>	Thursday, 1 August 2pm	All Welcome

For all Bookings Phone 5481 2400 or visit the website [www.campaspe.vic.gov.au/library](http://www.campaspe.vic.gov.au/library)





## Proposed solar

If you want to show support in petitioning against the Cooba Solar Factory proposed to be located in Colbinabbin, you can sign the petition online.

This petition of residents in Victoria draws to the attention of the Legislative Assembly, the Cooba Solar Facility proposal for Colbinabbin, (Central Victoria). Those signing this petition are not against renewables, however are against the proposed location, being in the middle of the Heathcote Wine GI, on prime, highly arable agricultural land, on the eastern slope of the Mt Camel hill range.

Colbinabbin, the town name derived from aboriginal meaning “the meeting of the black and red soils”, is renowned for it’s ancient Cambrian soil, and is not only a highly productive farming town, but also a highly sought-after grape growing country, and forms part of the popular Heathcote tourism mecca. The application also directly contradicts the Campaspe & State Planning Guidelines.

### Action

The petitioners therefore request that the Legislative Assembly call on the Government to reconsider the application of the Cooba Solar Facility, based on the location of the 665-hectare site with 740,000 eight-foot panels. For more information, contact: [crag.colbinabbin@gmail.com](mailto:crag.colbinabbin@gmail.com)

## Sympathy

Our sympathy to Andrew Branson and family on the death of his mother, Cynthia, long-time resident of Colbinabbin.

## Ladies and Sponsors’ Day and auction

This Saturday is a big one for the Colbinabbin Football and Netball Club ~ Saturday 20 July will bring you:

- Ladies Day: During the Seniors - join us for some bubbles and an afternoon of celebrating the women of Colbo!
- Sponsors Day: All sponsors are invited to 2024 Sponsors’ Day to say thank you. Drinks and finger food provided.
- Goods and Services Auction: Will be held after the game. Keep an eye out for the list of good and services available.

### FIRE BRIGADE ROSTER

July 21 Robert Brown, Sam Brown  
July 28 Paul Tait, Oliver Rathjen  
*If unable to attend for duty, call Chris/Leo.*

Siren, radio and test pager at 9am. Crew member should ensure the siren and radio tests are carried out. Vehicles should be checked for fuel and taken for a road test.

## PNG trip for the Weppner brothers



(L-R) Steve Ellis with the Weppner brothers, Peter, John and Geoff at their uncle’s gravesite in Lae.

Geoff, Peter and John Weppner recently returned from a trip to Papua New Guinea, the purpose being to visit the grave of their uncle on their mother’s side, Tpr Leslie John Patten 2/9 Commando Sqr, who was killed in action in March 1945 in the Aitape region of PNG and was laid to rest in the Lae War Cemetery, 200km north of Port Moresby.

The trip was lead and organised by Sgt Steve Ellis, formerly of Colbinabbin and life-long friend of Peter’s. Steve and Peter were talking one day and Steve mentioned he had just been to PNG. Peter said he had an uncle buried there and the rest took nearly two years of planning by Steve.

John’s daughter, Renée, looked after the

travel side of things, being a travel agent and Steve organised the itinerary and security. A graveside service was held for Les conducted by Captain Mathew from the Australian Army station in Lae. Mathew also gave them a tour of the cemetery where 2500 other Australian service people are buried.

The trip also included some sightseeing - a trip to the Kokoda Trail, a visit to the Australian High Commission in Port Moresby, an address by the residing Lt Colonel and a fishing trip in the bay catching shark mackerel and GTs.

A great trip - very very moving!  
*(With apologies for printing mistake in last edition. Ed)*

## Elmore Field Days volunteers needed

It’s that time of year when we ask for volunteers for the Elmore Field Days.

This year it is on in school holidays, so keep that in mind. Volunteers are needed to assist between 26 September and 4 October. This year we are doing things a bit differently, you can scan a QR code, use [www.ti-](http://www.ti-nyurl.com/EFDCC2024)

[nyurl.com/EFDCC2024](http://nyurl.com/EFDCC2024) or do it the old way. Contact Belinda on 0438 394 499 or Jacki on 0448 829 323. The sooner you get onto the website the more chance you have of getting the shift you want. The money we raise helps in so many way in our community both for the Colbo school and the wider community.

### Colbo Diary

Tuesdays - Colbo Pub Choir 5pm  
1<sup>st</sup> & 3<sup>rd</sup> Tuesdays Coffee and Cake 10.15am  
Thursdays - Men’s Community Shed

#### July

Sat 20 CFNC Ladies and Sponsor Day, Auction  
Sat 27 CFNC Back to Shamrock at Rochester

### LIBRARY



JULY  
Wed 24 Janice Tait  
Wed 31 Lynn Rathjen

**Cemetery Trust**  
**Mowing Roster** (lawn section only)  
July - volunteer  
August - Will Hayes

Around our towns Around our towns Around our towns Around our towns Around our towns

# Upcoming activities at Tat Community House

It might be a chilly winter, but there's plenty to do at Tatura Community House where you can keep warm and cosy! Here's just a sample:

**High Tea on Tuesday 6 August** – Enjoy delicious treats in the cosy atmosphere of Olive & Vine. High Tea is a staple in the community house calendar. On offer are sweet treats like slices, muffins, cakes and chocolatey goodies as well as savoury treats ranging from sandwiches and savoury muffins to pizza wheels. A great outing for you and your friends - buy a few raffle tickets to win one of our prizes and savour the goodies the wonderful team of volunteers will prepare for you. Tickets are \$20, book now as spots are selling out fast, Tuesday 6 August at 10:30am, Olive & Vine,

**Cosy Homes** – keep the warmth in during these cold months. Come and join in two information sessions with Terry Court who will show you some tips and tricks to make your home cosier. Learn about simple energy efficiency measures, current rebates, OH&S issues and recognising types of hot water systems. Save money and energy while you stay comfortable and warm. The info session is free. Thursday 8th August at 1:00pm.

**Tatura Community House Playgroup and A Cuppa and 54 Reasons Playgroup** – These groups give parents and carers and

their children aged 0 – 5 a space to play, connect and spend some quality time together. Tuesday playgroup enjoys nursery rhymes, stories and song. They then join the Coffee Hub group for an intergenerational catch-up. Wednesday's playgroup is organised by 54 Reasons. Tuesdays at 9:30 – 10:30am and Wednesdays 10:00am – 12:00pm.

**Artists wanted for the Red Shoe Exhibition in September** – Walkway Gallery and NOFASD (National Organisation for Fetal Alcohol Spectrum Disorders) Australia want you to create art pieces inspired by red shoes for our Red Shoes Rock FASD Art Exhibition in September. It doesn't matter if you only create one piece or what type of medium you use. Embrace your creative spirit and unite in using art as a powerful tool to promote awareness and understanding. For more information on NOFASD Australia [www.nofasd.org.au](http://www.nofasd.org.au).

**Join the Mahjong group** – are you interested in learning how to play this ancient Asian game? Join the brand new Mahjong group! They meet every Wednesday during school

term, 1:30 to 3:00pm. If you already know how to play Mahjong, come along and help teach the beginners. Do you have a Mahjong set that no one uses? Donations would be appreciated, or if you'd just like to lend it to the community house for a while... why not give it a go?

**Harvest Table** – Bring your excess fruit to the harvest table in the foyer of the community house, just out the front of the Library. Then people in need can access some yummy, locally grown produce. It's a fantastic and healthy way to reduce food waste, help people and give back to your local community.

## Coming soon

**Community Lunch** – a community lunch is being organised to celebrate the upgrade of the Community House kitchen. The wonderful volunteers will cook up a healthy and delicious two course meal for you. Follow them on Facebook to stay tuned.

A range of different services is on offer – check out the website, give a call on 5824 1315 or send an email to [manager@tatcom.com.au](mailto:manager@tatcom.com.au).

## Tatura childcare reports another great month at The Cubby

The children at The Cubby have enjoyed playing with their new car wash, a cake and burger stand and ice cream shop! These offer a fantastic opportunity for them to learn about sharing, role modelling, problem solving and communication.

They have been attending Story Time in the library, where they love listening to Julie and seeing all their friends from Tatura Children's Centre.

Children visited the library for an event during refugee week where secondary

school students from Shepparton from many different cultural backgrounds shared their culture in dances and songs. The children were especially fascinated by the performance of the Haka. Well done, everyone!

As part of the Cubby holiday program, they did a lot of baking. The children learned how to make scones and made their own funny faces biscuits. The dough was just as yummy before it went in the oven than after.

Everyone enjoyed a nice outing into town with a walk to the post office where children posted letters to their families. They had a great time at the playground and enjoyed their outing.

The staff at The Cubby are dedicated to providing quality care for children and ensuring that they have fun and memorable experiences.

Their license to operate covers childcare for fifteen children per day which offers the

opportunity to care for families in a very individual and personal way – you become part of The Cubby family.

## Extra assistance

Staff are there to support parents beyond the regular services of childcare centres. They can help you with your Child Care Subsidy application with Centrelink, connect you to support services or just have an open ear for the days where it all seems a bit much.

There are still have a few spots available. You can call to inquire about vacancies, have a chat and book a time to get to know The Cubby staff. Children up to age 6 can attend and Childcare Subsidy applies making it an affordable choice for families.

The Cubby is open Tuesdays, Wednesdays, Thursdays, and Fridays, 8:30am – 4:00pm in the orange building on Kerferd Street.

Call on 5824 1315 or 0490 117 030 to have a chat with one of the friendly staff.

**Rushworth Hardware**  
22 Moora Rd

---

*Gas bottle refilling . Building Supplies  
PVC Pipe and fittings . Water Tanks  
Electrical Supplies and appliances  
Power tools . Key cutting  
Stock feed . Bird seed  
Chainsaw sharpening, chains, spare parts and hand sharpening equipment*

---

**A huge range of products and services!**  
**Ph. 5856 1368**



## Natrad Radiators

**20 Campbell Street, Shepparton**  
**Phone (03) 5821 8500**  
Fax (03) 5821 8462  
[natrad.com.au](http://natrad.com.au)

### Radiator Service

- Car, Truck, 4WDs
- Repairs, Recores & Assemblies
- Industrial & Agricultural
- Air Conditioning
- 3 year Australia wide warranty

Nip into Natrad





# Health and Wellbeing

## New telehealth service at Stanhope Health

From Monday 12 August 2024, Telecare – Australia’s leading virtual care provider – will collaborate with Kyabram District Health Service (KDHS) to provide a new GP service at Stanhope Health called Stanhope Telecare Medical Centre.

The GP service will combine regular face-to-face consultations with weekly virtual telehealth consultations.

The service is the first of its kind in Victoria and aims to address the town’s healthcare needs after twelve months without a local visiting GP.

It is part of the ‘GPs in Community Health Project, which aims to explore better ways to deliver affordable, sustainable and viable primary care services in rural communities.

To introduce the service Stanhope Telecare Medical Centre will provide daily face-to-face consultations for the first three weeks (12-30 August 2024) when all appointments will be bulk billed.

Following this, there will be two days a month of face-to-face consultations (provided in one week), and two days of telehealth consultations each week for the remainder of the month.

These appointments will be bulk billed for pension and concession card holders and children under sixteen years.

All other appointments will be claimable on Medicare, with an upfront fee of \$80 and a Medicare rebate of \$42.85 (\$37.15 out of pocket gap fee).

### Allied health services

To support the new GP service a Practice Nurse will support clients with their face-to-face and telehealth consultations. All initial consultations will need to happen face-to-face, except for mental health consultations. Following the initial consultation, clients can see the GP face-to-face or virtually.

Stanhope Health client services team will continue to assist with meet and greet support.

Glenda Cowie, President of the Stanhope & District Development Committee Inc., said she was pleased to see a new GP service coming to the community after twelve months without a local doctor.

“I’m grateful for this much-needed addition to Stanhope and hope the community gets behind the doctors and service,” Glenda said.

Over the coming weeks, KDHS will continue to keep clients and the community updated via newsletters, local media and social media.

To book an appointment at Stanhope Telecare Medical Centre with Dr Ken-Tze Koh or Dr Raymond Wen from Monday 12 August 2024, call Telecare on 03 4800 5291 or email [stanhope@telecare.com.au](mailto:stanhope@telecare.com.au). Online bookings will be available soon.

### New faces for Stanhope Telecare Medical Centre



Dr Raymond Wen, General Practitioner, Medical Director of Primary Care Services at Telecare.

Dr Wen is interested in all areas of general practice but has particular interest in preventative care and mental health.

Dr Wen enjoys spending time with his family outdoors, particularly to places with natural scenery where he runs and listens to audiobooks.

## Diabetes Inquiry shows the need to strengthen food policy to protect young people

A Federal Parliamentary Inquiry into Diabetes has recommended strong policies to protect children from unhealthy food marketing and create a healthier food system.

Recommendations include:

- Protecting children from unhealthy food marketing on television, radio, gaming and online
- Ensuring Australia is food secure by providing equitable access to food
- Increasing physical activity through more inclusive and accessible neighbourhoods in local communities

VicHealth CEO Dr Sandro Demaio said the recommendations highlight the need to embed stronger regulations on food policy to combat companies exploiting children through harmful marketing and misleading packaging.

“All parents want their kids to grow up happy and healthy. It’s important that we live in an environment supporting people to eat healthy.

“But we know marketing for unhealthy food is reaching kids at a very young age. Many food companies deliberately target kids with their advertising because they know it creates pester power and creates consumers for life.

“We need to hold processed food companies to account by ensuring honest and transparent front-of-package labelling and restrict deceptive and persistent unhealthy food marketing so it’s easier for families to choose healthy foods.

“These recommendations highlight the need to embed stronger regulation on food policy,” Dr Demaio said.



Dr Ken-Tze Koh, General Practitioner and Rural Generalist.

Dr. Koh has a special interest in pre-hospital and extreme medicine. He has extensive experience in primary health, acute emergency, trauma, and injury management, and has worked in various challenging environments in remote places across Australia and internationally. He is also a founding member of several medical societies and has a strong commitment to medical education and humanitarian aid. When he’s not working, Dr. Koh enjoys outdoor pursuits such as mountaineering and playing the piano.



**MUD HUT YOGA**  
*Peace ~ Flexibility ~ Strength*

**For class times & information  
contact Sue Barlow**

**0438 523 415**  
[sue@mudhutyoga.com.au](mailto:sue@mudhutyoga.com.au)  
[www.mudhutyoga.com.au](http://www.mudhutyoga.com.au)

# Fifty years ago in our district....

Looking through the pages of past 'Rushworth Chronicles'  
.....compiled by former district resident Alan McLean



## Big price rise for Rushworth Chronicle in July 1974

Content and quality were down but there was a 20% rise in the Chronicle's price, up from 8 cents to 10 cents a copy. Increased cost of paper was the primary reason reported. Advertising rates also rose.

Peter Ross-Edwards, MLA, presented a Decentralisation Certificate to Rushworth Printing Company, publisher of the Chronicle. (Perhaps the paper was de-centralising, to Moora or Wanalta?)

A new savings facility commenced at Rushworth when Hotham Permanent Building Society appointed Ivan Jell as an agent, in association with his newsagency, which had operated for eight years.

## Waranga Shire

Cr Alan Hammond, elected Shire President after death of Cr Coyle, made presentation to Bill Furphy, retiring after 28 years as works superintendent. Bill took the job while waiting for his allocation of a Soldier Settlement block after the War.

Contract was let to Midland Housing, of Shepparton, to build four lone-person flats in Parker Street, at total cost of \$42,800. (I will take a couple, at the price!)

## Road accident

After football at Colbinabbin, cars driven by Rushworth men Bill Cruz and Wayne Britton collided. Both men were shaken and Britton's car more badly damaged.

## Schools

At Rushworth Primary, clouds loomed. Grades 2 and 3 wrote, "Next week our parents are coming to get our reports". The same class learned that "two-thirds of a person's body weight is water". (But isn't blood thicker than water?)

Grade 4 visited the sawmill and the forest, watching Mr Risstrom cut down a tree. (That would be front-page news today for several reasons, and imagine the permission slips for completion before the kids left the school grounds!)

Grade 6 were doing research on composer Mozart and making puppets.

## Community

Moora Fire Brigade roster: Brothers-in-law Ivan Baldwin and Neville Clarke. Colbo roster: John Borger, John Brown, Brendan Tuohey.

Rushworth-Colbinabbin Senior Citizens were to be entertained by musician Bob Stewart.

## Personal

Rev. McDougall, wife Anne and children Peter, Kristin and Bruce arrived from Wyndham, W.A., to take up the Anglican

ministry at Rushworth and Murchison.

Pam Laurie of Rushworth announced her engagement to Neville Chapman of Glen Alvie.

Constable Conway departed to join Footscray police station, already being served by Paul and Anthony Grigg who were ex-Rushworth, though previously here at school, not as police.

There was a photo of Graham Ross's Weimaraner stud bitch and litter of nine pups, the latter available for \$100 each.

## Football

Colbo at home kicked 15-18 in a thriller over Rushworth's 15-13. Returning to the team were Slimmons, McCubbery and G. Reid, all named in the best with McEvoy, B. Tuohey, B. McCormick and G. Brown. Horne got five goals for Rushworth who were without Lloyd, J. Raglus and I. Williams, replaced by Lambden, B. Thompson and W. Cruz. Lout and Bill Cruz were named in the best with O'Sullivan, Heily, H. Barlow, D. Roberts and M. Clarke.

Rushworth Seconds needed a selector to come out of retirement to make up the numbers, going down 3-8 to Colbo's 7-3. Les McMurtrie kicked three with usual suspects W. and T. Johnson, K. Wilson, B. McIntosh, J. Brown, T. Morgan and G. Rathjen named best for Colbo. G. Jones, G. Cruz, T. Shanks and T. Hawking were best for the Tigers.

Colbo then beat Elmore 14-10 to 8-11, Pinniger and Gerry Brown notching four goals each. Paul Tuohey was "kicking out to the centre", assisting McEvoy, Hammond, B. Tuohey, Lundberg, Emsley and McCormick. Colbo Seconds rolled Elmore 10-3 to 5-6, thanks to B. Cheatley, G. Maddern, J. Brown, J. O'Dwyer and G. Rathjen.

Rushworth trailed top team Tooborac 4-5 to 7-4 at quarter-time, 9-8 to 10-6 at half-time, 10-3 to 13-8 at three-quarter time, before kicking 5-11 in a great last quarter, to win 15-24 to 15-12. Alec Horne got five (as usual), named best with Farrer, H. Barlow, Schneider, Heily and O'Sullivan.

Rushy Seconds 10-10 to Tooby just 2-2. G. Hawking slotted five, a good player beside N. Clarke, B. Thompson, T. Hawking, R. Raglus and T. Cogan. Hector Hagan was best for Tooborac.

Girgarre was riding high, second on KDFL ladder, while Murchison sat second last. (Times have changed, 50 years on.)

## Netball

Rushworth defeated Colbo in A-grade but "B-grade will have to pull up their socks if they are going to make finals". B-grade skipper was Karen Oliveiri.

Both Rushworth senior teams beat Tooborac, without the scores given, but

"goalers Pauline and Kerryn were on target".

## Golf

Jack Borger and Reg McIntosh were 10 up in a 4BBB (whatever that is), ahead of Wes Risstrom and Les Hoyling 9 up. John P. Williams had an eagle 2 on the third hole.

Graham Spence and Doris Barlow won the Mixed Canadian at the Murchison tournament. (Not sure what the Canadian had to say about that.)

Stableford points event won by Bob Barlow on 45, over Doug Poulson and Keith Taylor. In B-grade, Ross Coyle 43, beat Jim Perry and Max Richards.

Associates Club Championship quarter-finals were heating up, with C-grade's Jan Ross accepting a forfeit when Lucy Barlow when down with flu.

## Pigeon racing

A prize for juniors went to Susan and Raymond Barber, after taking third place in a race from Finley into gale-force wind. (Their pigeon did all the work.) Fifth placed pigeon of Peter Geisler only made 619 yards per minute (and may have walked most of the way).

## Stanhope South carpet bowls

Winners were Bill Malins, Mrs Patton, George Milthorpe, Mrs Sherman, Mr and Mrs Kent, Mr and Mrs Brunt. Runners up Bill Hageman, J. Hepburn, Mrs Newton, J. Kline, P. McGlashan, Mrs Turpin and R. Steddar. (How did they all fit in the Stanhope South Hall?)

## Rushing to Whroo,

1853 to 1880



\$25

Alan McLean

0412 143 660

Books available:

Waranga News office and General Store Rushworth



# 天体联系 **CELESTIAL** **CONNECTIONS** 天体联系

STORIES OF CHINESE IMMIGRANTS TO THE  
WARANGA AREA

## Long serving teacher

A long-serving (and maybe long-suffering) teacher with the Victorian Education Department and local resident, Dorothy (“Dot”) Jean Salter, was of Chinese-Australian heritage. When she taught humanities subjects at Rushworth, some of the students called her “Ching” or “Old Ching”, reflecting the casual racism that was unfortunately still prevalent in the area in the 1960s and early 1970s. Dot retired in 1971 after 27 years of service at Rushworth Higher Elementary School, which later became Rushworth High School.

During her time at Rushworth, Dot rose through the ranks to become the Senior Mistress. Some of the girls from the ‘60s will remember her measuring their hemlines so that they were no more than the maximum height above the knee. The introduction of the mini-skirt had resulted in quite a few hemlines going up. There are many, many other stories about Dot, but suffice it to say that her willingness to respond to any provocation simply inspired some students to keep coming up with things that would get a rise.

She travelled on the Stanhope South bus with the students, where she ruled the roost, as she did not have a driver’s licence until later in life. According to one former student who travelled on the bus and shall remain nameless, “After gaining her licence, she would sedately follow the bus into the Rushy schools. But one morning, Mrs Salter got a rush of blood and decided to overtake the bus and beat it to Rushy. Unfortunately, this manoeuvre at the Zegelin Road intersection resulted in her steering wheel locking up as she turned into Zegelin Road. Her car, slowly turning in tight circles, broke through the adjoining dairy farmer’s boundary fence and scattered cows in all directions. All the children on the bus were beside themselves with laughter.”

## Chinese-irish heritage

Dot’s grandmother Bridget was an Irish lass born in Limerick in 1841 before coming out to Australia with her parents Thomas and Margaret Ryan. The family appear to have been working in the goldfields of northern Victoria. That could be where she met her future husband, known later as “James” Amoy.

James was a native of the island now known as Xiamen, just off the south-east coast of China in Fujian province. They

had their first child together prior to getting married in a Christian church in Castlemaine in 1862. Presumably, James had migrated to Australia in search of gold, as the family moved around various goldfield towns as their next three children were born.

By the late 1860s they had settled in a small town then known as Sago Hill (now Haddon), a few kilometres south-west of Ballarat. Their remaining nine children were born in that vicinity.

## Entrepreneur

While Bridget was mothering her growing family, James was developing his business interests. He engaged in mining as a tributor, which meant that he supplied certain elements required for the business in return for a percentage of the profits. James organised Chinese labourers and supplied some of the equipment required in the mining ventures. Not everything went smoothly. He was attacked with an axe by miner Chun Goon in 1882 in a dispute over the purchase of mining equipment.

James survived and branched out into storekeeping in Haddon. Given the size of the town, it was possibly the only store in town. In the mid-1880s, James became naturalised. He also purchased one of the two Haddon pubs, the British Queen Hotel, from countryman Ah Tan for the sum of 101 pounds and 10 shillings. The pub was delicensed by the Licensing Reduction Board in 1908, but James had already relinquished the ownership by then.

## Dot’s mum

Dot’s mother, Ellen May Moy, was born in Haddon in 1882, the eleventh of Bridget and James’ children. When she was only ten, something went awry in her parents’ marriage. James had allegedly left Bridget, who still had six of her children to care for but had no means of supporting them. The case finished up in court, where James was given an order to provide maintenance of one pound and ten shillings per week.

Ellen later married Hugh Featherstone, and Dot was the first of their three children, born in 1907 at Ballarat East. In turn, Dot married school teacher Edgar John Salter in Bendigo in 1931. The family moved to Rochester later in the 1930s and then to the Waranga area, where they had property at Stanhope South. Dot remained in the area after the death of her husband in 1955, who she outlived by 50 years.

Sources: Trove and Ancestry websites

## A Name from the Past *Jean-Claude Le Deux,* (known as John)

The name Le Deux can be found across the district, with multiple generations still present. For newcomers to this area, the name is pronounced “Le Doo”.

The original Le Deux seems to have been Jean-Claude, who with his wife, operated a wine shop in the Bailieston area, while also selecting farming land which remains in the family. Some years ago, descendants erected a tribute on his grave in Whroo cemetery, naturally using his correct Christian name.

However Jean-Claude was recorded as John at the time of his death, presumably as he had been known commonly by that English name. The Rushworth Chronicle of 23 February, 1900, reported his demise.

“Many old residents of this district will regret to learn that Mr John Le Deux, of Bailieston, died suddenly on Tuesday last. He left as usual to visit his farm about 9 o’clock in the morning, and as he did not return to tea a search was made and his body was found in one of the paddocks about 9 o’clock in the evening.

An enquiry was held by Dr Heily, J. P., on Wednesday, and Dr Christie, who made the post mortem examination, deposed that death was the result of a rupture of one of the large blood vessels of the heart from natural causes. The deceased was a very old resident of Bailieston, and was much respected.

The remains were interred in the Whroo cemetery yesterday afternoon, Mr Mullany officiating at the grave.”

The headstone in Whroo cemetery indicates Jean-Claude Le Deux’s age as 59.

John’s great-grandson is Tim Le Deux, a member of the Whroo Cemetery Trust, and his wife Jasmin owns the General Store at Rushworth.

*Alan McLean*

## Request from Alan

Lately I have had a run of requests for the book “Grass-seeds and Thistles – the early years of Moora, Gobarup and Wanalta”. It is completely out of stock. If anyone has finished with a copy purchased a few years ago, there is a buy-back offer available! If you can help, I would be grateful for a call on 0412 143660. Thank you.  
Alan McLean.



# All about wildlife

*Kirsty Ramadan from BoHollow Wildlife is a wildlife rescue expert. Here she shares some of her knowledge about our very familiar wildlife neighbours.*

## Emus - flightless, feisty and feminist

From as far back as my earliest memories I have had a passion for animals. All animals!

Birds have held an extra special place in my heart though and there are a number of reasons why.

Bird brains are very unique and many species of bird are highly intelligent - this has always fascinated me. The diversity of birds in Australia is staggering. I never get bored with birds. I am privileged to work with our largest birds such as wedge-tailed eagles, pelicans, swans and yet also work with willy wagtails, silvereyes, honeyeaters and everything in between. Insect eaters, fish eaters, carnivores, seed eaters and omnivores. Specialised diets and behaviours.

Birds are the ultimate challenge and always keep you on your toes. The main attraction to birds to me as a child was their ability of independent flight, and it still is.

I'd always imagine how they must feel to be able to spread their wings so easily and take flight, in the air, above the world. For me, this always felt like the epitome of freedom. I always wished I had the same freedom of flight which birds possess.

There is a bird which holds just as much fascination and awe in me though that goes against all those things...the emu. The emu cannot fly. It does not possess an impressive wingspan and the emu brain is considered one of the least intelligent in the bird world.

Despite these shortcomings emus are pretty damn special. Emus really are a relic of the past. Their legs and feet are akin to what I'd imagine some of the dinosaurs would have possessed. Their straw like feathers are not refined and are held together by barbs which birds of flight rely on and their wings are tiny, useless appendages which actually have a tiny claw on the tip which is also useless.

I don't like to admit it, but emus are a bit short on smarts. They are an inquisitive bird, a bit unpredictable and can be dangerous with their kicks and strength. Emus are up there with full grown kangaroos and wombats for being one of my least favourite animals to capture in the wild because they are not easy animals to wrangle and transport. Also they are capable of inflicting nasty and serious injuries when they are frightened and trying to defend themselves.



I have transported many an emu with horse floats. Sedation is very hit and miss with emus so it can't be relied on for safety reasons and they really are a challenge.

On the flip side, emu chicks are a delight to raise. They have endearing, quirky characters, make you laugh with their antics at play and they can run like the wind!

Despite the inference of lack of intelligence, female emus leave both the nesting duties and the raising of their young to the males ... this suggests they may not be as dull witted as appearances suggest! The males are loyal, devoted parents and they bear the burden of parenthood with a quiet dignity, protecting eggs and young diligently.

We have several emus which reside at Bohollow. All these birds are on private licence so are not wild birds.

Emus breed and nest during winter so it's egg laying time now. Females can keep laying eggs for a few months - after all, they are not concerned about parenting duties so they lay as many as they can, they can lay in more than one nest and they trust the males will see their offspring reach independence.

Perhaps female emus, although not having the freedom of flight have evolved to have a totally different kind of freedom!

For injured wildlife contact  
Kirsty at Bohollow on:  
0447 636 953

## Rushworth P-12 receives Youth GO! Grant

**Rushworth P-12 College is a proud recipient of a Youth GO! Grant from the Shire of Campaspe.**

The HOPE (Hands On Practical Education) students from Year 7-10 are working on refurbishing the vegetable garden area at the College and will be using the funds to assist in the process. Students will be working with their adult mentors on Wednesdays to refurbish the garden area, build new beds and plant the garden with seeds and plants.

The produce from the new vegetable garden will be used in the Food ROCK's program, which is currently providing three meals per day to their students.

The aim of the project is for the students to develop key skills like communication, planning, budgeting, teamwork and more. As a college we are looking forward to sharing the progress with the wider community.

Campaspe's Youth GO! Grant is supported by the State Government's Engage! Program and assists a variety of groups and

organisations to run youth focused activities and events through the year.

Applications are assessed by representatives from Council's Youth Action Group (YAG), supported by Council Officers.

### Successful recipients of the Campaspe Youth GO! Grant are:

- Rushworth Hands On Practical Education – Vegetable Garden Project - \$1,000
- Kyabram Blue Light – 2024 Halloween Disco - \$1,000
- Echuca Twin Rivers Specialist School – Senior School Camp - \$1,000
- EMAI Arts Prize – EMAI Youth Arts Prize 2024 'Nature Speaks' Exhibition - \$1,000
- Rochester Secondary School – Mural Project - \$1,000
- Echuca College – Kitchen Garden Project - \$500





## ON THE BRINK *by Neil Laurie*

Looking at endangered or extinct flora and fauna.

### Goats

Australia has a thriving population of feral goats, up to 2.6 million, depending on whether it is a drought year. They can be found in all Australian states and the ACT with the largest populations occurring in Western Australia. They do well in the semi-arid regions; more so if there are few dogs or dingos. This is why there are fewer goats in South Australia while across the border with its dog fence they are proliferating in western NSW.

Domestic goats (*Capra hircus*) first arrived in Australia with the First Fleet. Being hardy they were a perfect dairy animal for the harsher Australian conditions, as well as providing some meat. Cashmere and mohair breeds were introduced in the 1970s. Any escapees or liberated goats quickly bred up into the current feral populations. Most feral goats are descended from the wool-producing breeds.

Goats are not good for the natural environment. Being hard hooved, they damage the ground, especially on sand and along waterways. Being browsers, they damage shrubs and trees and eat-off young trees and plants. Being large and quite aggressive they can out compete native animals for water and rock shelters. Where there are high numbers of feral goats there is usually substantial environmental damage. There are concerns that goats can spread ovine diseases.

It is almost impossible to eradicate feral goats. In some areas they are mustered in much the same way as cattle. Fencing a water supply and installing a one-way gate is a highly effective way to trap them.

Sometimes a captured goat is released with a radio transmitter collar. This 'Judas goat' will then join a herd and the herd is then easily located. Goats in rough terrain can be mustered or shot using helicopters. Whatever is done, some goats escape capture and being able to breed twice a year (often having twins) the population soon rises again.

It is not all bad news. About fifteen years ago some graziers started rounding up goats and selling them for pet food. Eventually a few abattoirs were certified to process goats for human consumption. Today the goat meat industry is worth \$242 million a year with most meat being exported, mainly to the US. The industry is quite unstable; availability of goats fluctuates (dropping in droughts) and issues with abattoirs (or the lack of them) means that the sale price of goats also fluctuates wildly. Regardless, many graziers are seeing goats as a better alternative in marginal regions to sheep. Sheep are grazing animals and mainly eat grass, and sometimes saltbush, and require a greater level of care than goats. In recent times dorper sheep have been proven successful in these marginal regions but feral goats are even more successful.

Locally, there have been feral goats in the forest. My father said when he was a child, he saw goats on the near vertical sides of the Balaclava mine at Whroo and in the 1990s I saw two nannies and their kids between Whroo and Graytown. However, I have not seen the large populations and widespread damage I have seen elsewhere....fingers crossed!



## Growing food for the fussy koala

Koalas are a popular attraction at the Kyabram Fauna Park. The Gargarro Botanic Gardens Inc. (Winter Road Girgarre), in conjunction with the fauna park, have set aside a significant portion of the gardens for a plantation of koala-friendly eucalypts.



The koala is a fussy eater - it requires leaves from a variety of different eucalypt species, all containing the essential nutrients they require to survive. Stands of Southern Blue Gums, Manna Gums, Swamp Gum, River Red and Gippsland Red Gums are doing well in the gardens.

Staff from the fauna park manage the plantation, collecting the leaves for their charges each week.

## National Threatened Species Day Can you imagine Australia without the koala?

One of the most treasured and yet most threatened species in Australia today is that universally recognised marsupial, the koala. Koalas have been listed as endangered in NSW, QLD and the ACT since 2022. But according to the Australian Conservation Foundation (ACF), "... the koala is not on the official threatened species list in Victoria and therefore the state government is not prompted to make any hard management decisions."

In fact some islands and some isolated Victorian mainland habitats have so-called "overpopulation" problems. These are predominantly on small offshore islands that fall outside of the koala's natural range (ie the area inhabited by koalas before white settlers arrived) and in isolated, inbred populations on the mainland.'

(Source: *Save The Koala Foundation* <https://www.savethekoala.com/about-koalas/the-koala-endangered-or-not/>).

### Koala diversity

A small population of genetically diverse koalas was discovered in South Gippsland in 2022. They have attracted the attention of a group of 'citizen scientists', a sub-group of Friends of the Earth, Australia (FoEA), whose research work may hold the key to the future of the species.

According to the Anthony Amis of Friends of the Earth, there are two distinct koala populations in Victoria and South Australia. One is the endemic koala population consisting of the original gene pool (located in South Gippsland), the second being those from genetically different island populations that have spread over Victoria and South Australia.

Friends of the Earth's key interest is the animals from the original gene pool, a small population of which have managed to survive the destruction of their environment since European settlement and slowly disperse through the region around Morwell National Park.

Friends of the Earth's Strzelecki Koala Action Team or SKAT, are a dedicated group currently researching and recording this remnant population living in small numbers within the Strzelecki Ranges, specifically in the Morwell National and Mullundung State Parks.

The information SKAT collects will be sent for scientific validation by qualified experts with the aim of gaining further protection for this unique and important group of koalas. The following link is a map showing the distribution of the Strzelecki koala. <https://strzkoala.australianmap.net/>

If you are interested in SKAT's work and would like to support them, tax-deductible donations can be made here: [https://www.melbournefoe.org.au/lachlan\\_abbott\\_legacy](https://www.melbournefoe.org.au/lachlan_abbott_legacy). Further reading: <https://www.savethekoala.com/about-koalas/interesting-facts/>

*(Information contributed by Irene Labbett from Girgarre)*

# NEWS FROM THE OP-SHOP AND FOODBANK

BROUGHT TO YOU BY RUSHWORTH COMMUNITY SUPPORT INC.

As the weather gets colder and fresh food becomes even more expensive, the Rushy Foodbank is there for you. Open three days a week (Monday, Wednesday and Friday) 10am to 12 noon, as well as the 'open all hours' little pantry. Just call in and be assured that a warm welcome will be waiting. Friday is hot soup day. Christine and the volunteers cook up a storm with fresh produce, if time is short, takeaway a portion.

## Men about town – WE NEED YOUR HELP

From time to time the OP Shop/ Furniture store could do with a strong pair of arms to help with furniture coming in and out of the shop. There are no commitments to this task, just someone we can call on when needed. Please let the Op Shop staff know if you can help out.

## OP-Shopping tips

### 1. Think outside of the box

It is always frustrating when you like a garment, but something is off – it fits well, but the buttons don't suit. It's a great blazer but the shoulder pads are too dated.

The answer? Mend it!

Clothes can easily be restored with some new buttons and tailoring. There are heaps of YouTube tutorials that can assist you, and when in doubt you can get some extra help from a local tailor. Your new custom garment will look full price. A second-hand pair of shoes can look fantastic with a good clean.

Pro tip: Clean your sneakers with Windex and swap out the old laces for fresh news one!



### 2. Do some quick research

Having your phone handy is fantastic way to understand more about the item you are about to purchase.

Is it rare or collectible? What is its resale value? Where is this item made? The more you know, the better you can spot that bargain.

Use apps like Depop, eBay or a simple Google search to find out more about an item.

## Farewell to Jean

*Oh no! Oh no! I hear the cry  
That wafts from Op Shop to the sky.*

*The volunteers are in despair  
Cos in the future, Jean's not there.  
She's off to find adventures new  
And leave us forlorn – and feeling blue.*

*No more her cheery morning greeting,  
No more her cheeky words on meeting*

*All our clients, young and old,  
Seeking treasures, finding gold.  
Who will put up with our singing  
Loud enough to set ears ringing.  
Who laughs with us and joins our dancing*

*In wigs and hats, our feet a-prancing.*

*Our shop has never looked so smart*

*Oh, Jean, we do not want to part.  
We wish you luck, we wish you well,*

*We wish new friends with whom you'll gel.*

*Thank you Jean, for all your care  
Adieu, farewell to someone rare.*

*by Heather Wellington*

## Did you know?

A few facts from Foodbank Australia's Webpage

- On any given day in Australia, more than half a million households are struggling to put food on the table
- Over 365,000 children in Victoria lived in severely food insecure households in the past year
- 55% of food insecure households in Victoria have someone in paid work
- 32% of households in Victoria with mortgages experienced food insecurity last year
- Over 540,000 households in Victoria went hungry in the last 12 months due to lack of funds, skipping meals or going whole days without eating
- 276,000 households in Victoria receive assistance from food relief organisations
- The rising cost of living is the most common reason why people in Australia are struggling to put food on the table.
- Foodbank helps feed 65,000 people every day







## Rushworth COMMUNITY HOUSE INC.

67 High Street Rushworth 3612

Phone (03) 5856 1295

Email:

[admin@rushcomhouse.org.au](mailto:admin@rushcomhouse.org.au)

Website:

[www.rushcomhouse.org.au](http://www.rushcomhouse.org.au)

Facebook:

[Rushworth Community-House](https://www.facebook.com/Rushworth-Community-House)

Office Hours:

Mon, Tues Thurs : 9.00am to 3.00pm

Wed, Fri : 9.00am to 1.00pm

Your local access  
point for Medicare,  
Centrelink and other  
Australian  
Government services.



## Housing help on hand

Rushworth Community House continues to work cooperatively with members of the Housing for the Aged Action Group (HAAG) to assist people find affordable housing in and around Rushworth.

HAAG can provide people with assistance to register for aged care support, and may help guide them through the processes that are often involved in registration.



The Group is supported by the Victorian Government, and offers free confidential advice, support and advocacy for folk aged 50 and above. It can provide guidance across a range of options, including:

- Public and community housing
- Retirement Villages
- Movable and independent living units
- Caravan parks
- Residential parks and villages
- Rooming houses.

HAAG can also help with emergency and crisis accommodation.

Group representatives will be available at Rushworth Community House on:

- **Monday 29 July from 12pm to 2pm**
- **Monday 19 August from 12pm to 2pm**

Anyone who needs help or advice with housing issues should contact the Community House on (03) 58561295 to arrange an appointment on either of these dates.

All housing-related enquiries will be handled with strict confidentiality.

## Saying thank you to our carers

Thursday 4 July was an opportunity for Rushworth Community House and Goulburn Valley Health to say thank you to some of Rushworth's dedicated carers with a special lunch held at the Community House.

The main course was a sumptuous serving of roast chicken and potatoes, accompanied by a variety of delicious salads and friendly banter around the table.

Dessert was a generous serving of chocolate slice topped off with ice-cream.

If you are caring for someone in our community, please consider joining the Rushworth carer's group.

Members simply complete an enrolment form, then come along on the first Thursday of each month. This is a great way to connect to other carers, enjoy some free time and share with us how we can support you. Michele Hanson, from GVH Community Health and Community House Manager Anita Pirie facilitate these sessions.



## Lantern walk lights up Rushworth night

Rushworth's 2024 Lantern Walk and Puppet Show was held last Saturday evening, 13 July. Supported by Rushworth and District Financial Services, the event started and finished at St Paul's Anglican Church and included a visit to the Waranga Health Hostel and nursing home in High Street.

After leaving St Paul's, the lantern group slowly moved down High Street, before being welcomed into the hostel by residents and staff. The group performed a number of songs and received a hearty round of applause.

Lanterns in hand, the group returned to St Paul's, to be greeted by mugs of hot soup (potato, vegetable or pumpkin) and a roll.

Then the lights came on and the puppet show commenced. The children sitting down were enthralled by the puppets and "The Reindeer Maiden" story was told.



The evening ended with everyone joining in singing around a camp fire.

The Community House was delighted to be part of this event, with lots of support provided by a variety of people and groups.

The House would firstly like to thank Julie Beer, who facilitates our theatre group, and members who participate in the group.

Thanks once again go to Rushworth & District Financial Services (our local Bendigo Bank branch) for funding 2024 Rushworth community lantern walk.

Sincere thanks also go to St Paul's Church for allowing the use of their site. Also to Rushworth Art Depot for running the lantern-making workshop and to Rushworth Foodbank for providing the soup and rolls on the night.

It was wonderful to see so many people and groups working together to bring the 2024 event to fruition. Hopefully it will return next year and organisers would love to see many more people from the community come along and join in.



# Kids Corner

- interesting things to know!



## Hey Kids!

**Have you ever played under or climbed up an old peppercorn tree?**

You can find peppercorn trees all over the countryside, in parks, along railway lines and as street plantings. They are often the only reminder that a farmhouse or an old school once stood in a paddock or an empty block. You can see quite a few escapee trees around the Whroo diggings. In this edition of the Waranga News we are looking at a common tree that originates from the other side of the world - South America.

The peppercorn tree (*Schinus molle*) is an introduced species that can grow to 15 metres in height. The peppercorn tree is long-lived and drought tolerant, which enables the tree to grow well and allowed its spread across Australia's often harsh landscape. The peppercorn tree is now classed



as an invasive weed in Australia. The seeds are spread by birds and other animals that eat the pink fruit.

The peppercorn tree is native to an area from the Peruvian Andes to southern Brazil. The word molle in *Schinus molle* comes from mulli, the Quecha word for the tree. The pink fruits of the peppercorn tree are unrelated to black pepper and are generally not consumed in Australia.

In traditional medicine, *S. molle* was used in treating a variety of wounds and infections due to its antibacterial and antiseptic properties.

Fresh green leaves in bunches are used in Mesoamerican traditional ceremonies for cleansings and blessings.

The leaves are also used for the natural dyeing of textiles in the Andean region. This practice dates to pre-Columbian times. The Incas used the oil from its leaves in early mummification practices to preserve and embalm their dead. *Schinus molle* is also used as a raw material in perfumery - the next time you walk past a peppercorn tree pick some leaves and smell their distinctive fragrance!

The tree was first introduced to Australia by the director of Sydney's Botanic Gardens in the 19th century. At this time importing and exporting tree and plant species was considered the most important role of botanical gardens. During this period Australian eucalyptus species were introduced to California, Brazil and Argentina, whilst many species from the same areas were imported to

Australia including the Jacaranda, the peppercorn tree and the Bougainvillea.

The peppercorn tree grew well in the Adelaide Botanical Garden's alkaline soil, so the director of the gardens enthusiastically promoted the tree as a dry tolerant species in the early days of the colony. The tree was traded along the Murray River system by paddle steamers and by the mid 1890s the tree was widely used in Victoria and NSW. Many of the peppercorns you see today were most likely planted between 1890 - 1910 as ornamental trees or windbreaks for paddocks.

Peppercorn trees fell out of favour due to their disruptive root system and their attraction to white ants. They also outcompete native plants including grasses, shrubs and ground covers, therefore reducing food and shelter for native animals. Their sticky, clear sap may cause dermatitis in sensitive individuals. Wattles, grevilleas and other native shrubs are now used to create windbreaks for paddocks and roadside plantings - benefiting indigenous flora and fauna eco-systems.

The lifespan of peppercorn trees is unknown in Australia - these trees (left) were planted by Phillip and Lucinda Ryan on their Colbinabbin East farm in the 1890s and are flourishing almost 130 years later.



C	I	N	T	R	O	D	U	C	E	D	B	D	R	A	F	V	K
A	P	H	V	O	P	Z	F	A	R	M	Q	L	I	U	O	L	V
J	N	E	S	P	R	E	Z	U	B	U	W	K	L	S	G	P	R
A	L	T	P	D	W	N	P	A	T	O	E	M	J	T	S	A	A
C	C	O	I	P	R	L	A	P	D	R	T	O	Y	R	H	D	I
A	C	L	S	S	E	O	G	M	E	E	E	A	V	A	S	D	L
R	C	E	H	Y	E	R	U	A	E	R	L	E	N	L	J	O	W
A	E	R	W	S	D	P	T	G	R	N	C	A	O	I	X	C	A
N	S	A	E	W	O	N	T	R	H	D	T	O	I	A	C	K	Y
D	N	N	C	K	V	I	E	I	E	T	E	A	R	D	G	A	C
A	I	T	X	K	F	I	L	Y	C	E	Z	N	L	N	E	R	L
L	A	N	D	S	C	A	P	E	U	A	L	J	S	Q	D	Q	X

Find the following words in the puzzle.  
Words are hidden → ↓ and ↘ .

- |            |           |        |
|------------|-----------|--------|
| PEPPERTREE | JACARANDA | GARDEN |
| INTRODUCED | LANDSCAPE | SYDNEY |
| ORNAMENTAL | ADELAIDE  | PEPPER |
| PEPPERCORN | TOLERANT  | FARM   |
| ANTISEPTIC | PADDOCK   | SOIL   |
| AUSTRALIA  | DROUGHT   | TREE   |
| BOTANICAL  | RAILWAY   |        |



*Around our schools Around our schools Around our schools Around our schools Around our*

## Engineering and Cooking at Stanhope Primary School

While our Grade 4-6 students attended the Cottage by the Sea camp at Queenscliff on the last week of term 2, Prep-Grade 3 students have enjoyed some very hands-on learning. Mrs Foley reinforced some maths, science and literacy with a cooking class. Students mostly enjoyed the end result of their hard work – chocolate brownies!

We were also fortunate enough to have a visit from Engineers Without Borders, who worked with students from Prep-Grade 3 on experiments and modelling for an appropriate housing project.

**Right: Mrs Foley provides instruction for Mercedes, Alexis and Spencer.**

**Below right: Students undertook experiments for the more practical aspects of the project.**

**Below: Daisy and Mercedes tackled the budgeting.**



## Youthrive Victoria Scholarships now open

**Youthrive Victoria's round of scholarships is now open to rural and regional Victorian students planning to undertake further study in 2025.**

Each year, the local not-for-profit provides a number of scholarships to Year 12 students who plan to undertake university studies, or further develop skills through vocational training.

In 2023, eleven Youthrive\* Victoria Rural University scholarships and twenty-one Rural Chances scholarships were awarded to young rural and regional Victorians looking to undertake further study in 2024.

Thanks to funding generously provided by philanthropic donors, ten university scholarships (\$10,000 per year for three years) and twenty vocational scholarships (up to \$5000) have been made available to young

rural Victorians wanting to up-skill or pursue tertiary study in 2025.

Youthrive Victoria CEO Andrew McGuckian said, 'We believe that our scholarships and programs are helping to create positive outcomes for students from rural and regional Victoria and hope to see a large number of applications for both our university and TAFE scholarships this year.'

The scholarships provide financial support to assist with living expenses and travel costs, specifically addressing the needs of students from regional areas. Youthrive Victoria also offers 'Wrap Around Care', which includes mentoring, capacity building

and development opportunities.

University scholarship applications are now open, and close on 25 August 2023. Rural Chances vocational scholarships are now open, and close 14th November.

More information about Youthrive Victoria's scholarships and how to apply is available at: <https://www.youthrivevictoria.org.au/scholarships/>

\* Youthrive Victoria is an education charity with the purpose 'to build capacity within rural communities by further developing the skills and capabilities of young rural people, enabling them to make a significant contribution.'



# Around our schools Around our schools Around our schools Around our schools Around our P12 visit Yarra Valley Chocolate factory - twice!

## Foundation-Year 6

On Thursday 13 June, the Foundation-Year 6 students went on an excursion to the Yarra Valley Chocolatier. It was a great experience for all as we made chocolate lollipops and got to taste test a variety of different chocolates which we don't normally see! We were also lucky enough to get a free 'mega scoop' of ice cream. Everyone headed back to school with full stomachs and a smile on their faces after a great day!

Students then wrote about their experiences, as seen below.

*Katelyn Russell*

## We made chocolate

On Thursday 13 June, we pulled up to the Yarra Valley Chocolatier and Ice Creamery. Everyone on the bus felt a sense of joy as the smell of chocolate and ice cream roamed the building. We were beautifully greeted by Tanya and Karen; we were told about the history and where chocolate was made. After that we tried several chocolates like; ruby, 70% dark, coconut choc, choc covered pretzels, strawberries and cream with dark chocolate, freeze dried strawberries, choc covered snakes and finally a eucalyptus and honey chocolate. In my opinion my least favourite was the eucalyptus and honey chocolate. After that, we made more chocolate and added more chocolate and sprinkles, the table was cold so the chocolate would set easily after we made the chocolate lollipops. We got a token for a mega scoop of ice cream, I got rocking rocky road, it was really nice. We then got time to buy some things- I bought two rocky roads, one normal and one apple caramelised white chocolate and then we went home, and I fell asleep straight away.

*Zandar Parker*

## Taste-testing

On Thursday 13 June, me and the rest of the primary went to the Yarra Valley chocolate factory. First, we started off with our two-hour long drive down there, on the way we got to start 'Hop' the movie. Next, we got inside and jumped right into the taste testing and making the massive chocolate lollipops!

*Wyatt Rodwell*

## Yummy in my tummy

Hello, yesterday we went to the chocolate factory we saw how to make chocolate and where chocolate came from. Then we made our OWN...CHOCOLATE LOLLIPOP that was amazing! I put choc chips, chocolate circles and sprinkles with more choc chip. At the end of the class, we got a free mega scoop of ice cream, and you all know I got mint choc chip, and it was yummy in my tummy! Then if we brought our own money, we could buy something for our family and friends. Then we were on the bus for an hour and a half drive to school.

*Sophia Porter*

## Year 8's turn to visit Yarra Valley Chocolate Factory

June 21, it was the Year 8 classes' turn to visit the Yarra Valley Chocolate Factory.

Students were provided samples of chocolate where the students exclaimed which ones were their favourites and which ones you were "weird" to like. The students then decorated a giant chocolate button after filling a metal ring with chocolate, lifting it and then moving the paper in a circular motion to increase the size. The decorations ranged from self-portraits to patterns to fitting as much as you could on it.

Once the students were done, they then went and got a taster of ice cream, where most students including Will Ogden stated that they felt so full and couldn't finish (which is a rarity we believe!). Then it was a quick look around the shop where students purchased gifts for their families and headed home listening to music all the way.

*Sorcha Curtis*

## Innovation and resilience abound.

Due to some issues that arose, the new Technology building at P-12 college was still not ready for Design Technology classes when promised so Ms Klinberg got the students to be creative on a few small-scale projects.

Students in Year 7/8 were given the challenge of creating a version of the bridge over the Goulburn River at Murchison. Students are to be commended on their efforts (and potential new design ideas).

And in Year 9/10, students were given the challenge to design their own stick furniture, using very limited resources and lots of natural sticks.

Below are some of the innovative chairs and stools designed and fashioned from sticks and rope by the Year 9/10 students.





# Around our schools Around our schools Around our schools Around our schools Around our Art room wrap up for term 2 at P-12 college

The Art room is always a busy place, and it has been great to finally settle in to the refurbished space, where everything can be stored away.

It has new tables and chairs and a fresh coat of paint and is now an even better place to create lots of art. Students in Year 9/10 this term have been creating their own canvas works after completing a busy semester of various art projects.

Congratulations to Matilda Lockwood and Emma Marshall who got their art works displayed in the main hall.

Students in Year 4-6 have learnt about the world of Steampunk, looking at drawings and different styles to combine some sculptured pieces that embrace fantasy with science. Students certainly enjoyed this project, and some pretty crazy sculptures were proudly on display in the main hall.

*Elli Duthie*



Emma Marshall's art work was displayed in the main hall.



Matilda Lockwood with her art work on display in the main hall.



Bridge designs above - and at right.







## Baptism day for Ella

It was a special day for little Ella Clark when she was baptised at Sacred Heart Church, Cornella.

You can tell she was feeling important by her photo! Ella, daughter of Cameron and Lizzie, is pictured with her mother, Lizzie, and her godparents, Jen and Will Hayes.



## Sandhurst's Bishop appointed to study group



Bishop of Sandhurst, Shane Mackinlay, is one of three Australians who have been named among the members of Vatican-appointed study groups looking at questions such as women deacons, the ministry of bishops, and synodal formation for priests from last year's Synod on Synodality.

The groups are entrusted with the task of delving into ten themes emerging from the report of the first session and identified by the Pope at the end of an international consultation.

Bishop Mackinlay is appointed to the group studying: The synodal missionary face of Church groupings.

## Caritas marked NAIDOC Week

Caritas Australia marked NAIDOC Week by celebrating its First Nations partners and the projects they support together in communities across Australia.

Caritas Australia has been working with First Australian partners since 1972. It supports seven programs across six local partners that are designed and led by First Australians, with

18,617 program participants last year.

NAIDOC Week is a special time to recognise and appreciate the enduring strength and beauty of First Australian cultures.

Caritas Australia works closely with and supports the National Aboriginal Torres Strait Islander Catholic Council.

## District Church Times and Contacts

### Anglican

- St Paul's, Rushworth: 0419 512 632  
- 9.30am 2<sup>nd</sup> Sunday of month - lay led service  
- 9.30am 4<sup>th</sup> Sunday of month - Communion
- Christ Church, Murchison: Rev Andre du Plooy  
0458 155 930  
-10.30 am Thursdays Holy Eucharist  
-11am service every Sunday
- St Matthews, Stanhope: 0419 855 964 (Church Warden)
- St John's, Colbinabbin: 0428 329 344 (Mick Clayton)

### Presbyterian

- St Andrew's, Rushworth: Sunday 9am: Minister Kalpan Vasa 0477 241 042 or Elder Gary Dunstan 5856 1332.
- St Andrew's, Stanhope: 5831 6494 (Rev Kyung Rae Ee)

### Catholic

St Mary's Parish. 1<sup>st</sup> and 3<sup>rd</sup> Sundays: Cornella 9am; Stanhope 10.30am. 2<sup>nd</sup> and 4<sup>th</sup> Sundays: Rushworth 9am; Murchison 10.30am. 5<sup>th</sup> Sunday: One Parish Mass - Rushworth. Contact a team member on the parish mobile phone: 0459 898 925. Sunday Mass continues online from St Kilian's Sundays 10am.

### Shine Church, Stanhope

Sunday services at 10am at the Stanhope Community Hall. All COVID restrictions abided by. Kids church running as well during service. More info call Wal Sinapius 0408 393 398.

### Living Waters Rushworth:

Sunday 3.30pm coffee: 4pm service 0428 323 631 (Pastor Peter Guerra)

### Generations Church, Tatura

5824 3240 (Pastor Jeremy Burr)

### Salvation Army: 5852 3875

### Uniting Church

Waranga Uniting Churches - Rushworth, Colbinabbin, Murchison and Tatura. Service Times: Weekly at 9.30am (with the 'room' open for a chat at 9am)

Every congregation is open for services which will be streamed each week into all four of our church buildings.

Each week one congregation will host the service with people in other congregations participating in leading the readings, sharing news and fellowship via the magic of Zoom.

You are welcome to join us in person or from your lounge room via Zoom.

The link for the Zoom service can be found on our website [warangaunitingchurches.net.au](http://warangaunitingchurches.net.au) or can be emailed to you each week.

*As you gather around the dinner table, join hands to give thanks to God for all his blessings.*



### GRACE BEFORE MEALS

For food in a world where many walk in hunger; for faith in a world where many walk in fear; for friends in a world where many walk alone; We give you thanks.

## CLIVE COVENTRY FUNERALS

*Providing an individual funeral to celebrate life's journey*

Servicing Colbinabbin, Murchison, Rushworth, Stanhope, Tatura & district

*Reasonably priced funerals to suit all budgets*

**5852 1619**

Locally owned and operated

**5831 3922**

92 Allan Street, Kyabram

113 Corio Street, Shepparton



living the  
**GOOD LIFE**

**Why imperfect is better than perfect**

**In the film ‘Good Will Hunting, a poignant scene unfolds where Robin Williams’s character, Sean Maguire, shares a personal story about his late wife with Will Hunting, played by Matt Damon.**

This conversation becomes a pivotal moment for Will, as it illuminates the beauty of embracing imperfections within relationships.

Here’s a part of the dialogue from that memorable scene:

Sean shares with Will: “My wife used to fart when she was nervous. She had all sorts of wonderful idiosyncrasies. You know, she used to fart in her sleep. I’m sorry I shared that with you. One night it was so loud it woke the dog up. She woke up and went ‘Ah was that you?’ And I didn’t have the heart to tell her.”

He continues: “She’s been dead two years, and that’s the stuff I remember: wonderful stuff, you know, little things like that. But those are the things I miss the most. The little idiosyncrasies that only I knew about. That’s what made her my wife. Oh and she had the goods on me too, she knew all my little peccadillos. People call these things imperfections, but they’re not, aw that’s the good stuff.”

This dialogue beautifully captures the essence of true love’s embrace of imperfections. Sean’s reminiscences about his wife reveal how the quirks and the small, often overlooked aspects of a person can deeply endear them to their loved ones, highlighting the profound connections that make each relationship unique and precious.

This theme of embracing flaws is not confined to personal relationships but extends to broader aspects of life, such as storytelling and farming. In narratives, the most compelling stories often begin with an imperfection or mishap that sets off a cascade of challenges and growth, leading to a meaningful resolution. On the farm, every season presents its set of imperfections—crop failures, equipment breakdowns, unpredictable weather. Yet, these challenges cultivate a resilience and adaptability among farmers. The weathered hands and faces of those who work the land are not signs of failure but badges of honour, symbolizing dedication and hard work.

Our modern culture, heavily influenced by social media, relentlessly pushes the pursuit of perfection. We are constantly bombarded with images of flawless beauty, success, and happiness, creating a skewed perception of reality. However, embracing our imperfections means recognising and accepting the unseen struggles and failures behind these curated snapshots. This acceptance makes us genuinely human, fostering creativity, innovation, and deeper connections.

The Christian faith deeply resonates with the theme of embracing imperfections. Jesus’ ministry was marked by his interactions with those considered flawed by societal standards—the lepers, the tax collectors, the sinners.



**Peter denies Jesus - not perfect.**

He emphasised that it is not the perfect who need grace, but the broken, advocating a radical acceptance and love for the imperfect. This is powerfully demonstrated in the Biblical story of Jesus and the Apostle Peter.

Peter, one of Jesus’ closest followers, was known for his impulsiveness and errors. Despite his flaws, including denying Jesus three times during the crucifixion, Jesus did not reject him. After his resurrection, Jesus specifically seeks out Peter and reaffirms his trust in him. By asking Peter if he loves him three times, Jesus mirrors the three denials, not to condemn but to heal and restore. Each affirmation from Peter leads to Jesus entrusting him with a significant role, highlighting themes of forgiveness and redemption.

This narrative exemplifies the unmerited favour—grace—that God extends to humans despite their flaws and failures. It teaches that love and acceptance are not conditional upon perfection but are gifts acknowledging our inherent worth and potential for growth. It encourages believers to accept their imperfections as opportunities for divine transformation and personal development.

As we navigate our own lives, let us value these imperfect moments—those that teach resilience, compassion, and humility. Instead of striving for an unattainable ideal, embracing the gospel of grace, forgiveness, and second chances allows us to honour our journey and foster a more compassionate and authentic community.

The stories that most profoundly touch us are those filled with imperfection, struggle, and redemption. They remind us that it is through our imperfections that we find our true strength and beauty, encouraging us to embrace ongoing change and the rich tapestry of life shaped by our unique flaws.

This is the gospel, and it’s good news.

*Brian Spencer, Minister  
Waranga Uniting Churches*

**UC elect next  
President-elect**

**The 17<sup>th</sup> Assembly of the Uniting Church has elected Rev Dr Paul Dongwon Goh as the next President-elect of the Uniting Church in Australia. He will be the first Korean to serve as President and will serve as the 18<sup>th</sup> President from 2027-2030.**



In his acceptance of the role, Paul said, “Beloved Assembly members, this morning God has once again surprised me through your collective discernment and call to be your President-elect of the Uniting Church in Australia. I’m incredibly honoured and humbled. Thank you for putting your trust and support in me.”

He brings a deep passion for and extensive experience in multicultural and cross-cultural ministry.

**VALLEY FUNERALS**  
*‘The caring people’*  
Tatura and G.V. Areas  
**5824 1180**  
Locally Owned  
Affordable Funerals

**Kyabram & District Funeral Services**  
*Serving our Community – Contact Colin and Susan Moody*  
Serving Rushworth, Stanhope, Girgarre, Colbinabbin, Corop, Toolleen, Murchison  
Nagambie and Tatura.  
Elva Moody is our Rushworth Representative  
**Phone: 0428 859 593**  
**119 Albion Street, Kyabram 3620**  
**Phone: 5852 1061 Mobile: 0409 935 375**

# WARANGA NEWS CLASSIFIEDS

## DEATHS

**BRANSON  
(nee Taylor)  
Cynthia Isobel**

**21/09/1930 – 06/07/2024**

A woman of strength and fortitude.

Beloved wife of Harry (dec)

Loving Mother to Kate (dec), Lizzie and Andrew and Mother in law of Cathy

Proud and loved Grandmother to Miranda, Matilda & Molly

Great grandmother to Charles & Violet.

Special thanks to BUPA Echuca for all your love and care.

Privately buried in Colbinabbin Cemetery.

*Will be sadly missed.*

## BEREAVEMENT THANKS

**Bereavement Thank you  
NOELLE GRINTER**

*Thank you to all who sent cards, flowers, condolences, phone calls, thoughts and prayers on the passing of Noelle. It is very much appreciated by all the family.*

*Please accept this as our personal thanks.*

## POSITION VACANT

**Position Vacant  
Part-Time Casual  
Rushworth Op Shop  
Co-ordinator**

**Reporting to Rushworth Community Support Committee of Management.  
11 hours per week – 22 Hours paid per fortnight  
(award rate plus superannuation)**

The position is available for an energetic person with retail experience to work in the shop at least two weekly shifts (9 am-2 pm). In addition, coordinate and liaise with volunteers and oversee staff training and rosters.

Take responsibility for cash handling and stock rotation, and arrange waste collections.

Must have vision and enthusiasm and can integrate easily with an experienced team of volunteers.

Please apply by email to Tina Hanigan: [tina\\_in\\_rye@hotmail.com](mailto:tina_in_rye@hotmail.com) by Wednesday 24 July.

## TRADE & SERVICES

**Clean Edge**  
cleaning ~ gardening ~ maintenance

*Inside and out  
we've got you  
covered*



**Benn 0493 601 877**  
**Lucy 0411 898 364**  
[cleanedge33@gmail.com](mailto:cleanedge33@gmail.com)

**Support our advertisers  
who support  
your community  
newspaper**

## Campaspe Shire Council postal election

*My council, my vote*



### You must be enrolled to vote

A general election for Campaspe Shire Council will be held in October 2024. To be able to vote in the election, you must be enrolled by the close of roll at **4 pm on Wednesday 7 August 2024**. Two categories of voters can be enrolled to vote in the Campaspe Shire Council election: State-enrolled voters and Council-enrolled voters.

### State-enrolled voters

#### Am I enrolled to vote?

You are automatically enrolled for this election if:

- you will be 18 years of age or over on Saturday 26 October 2024 and
- you live in Campaspe Shire and you are on the State electoral roll for your current address.

#### You need to enrol if:

- you are an Australian citizen aged 18 or over on Saturday 26 October 2024 and
- you live in Campaspe Shire and you are not on the State electoral roll or
- you have lived at your current residential address within Campaspe Shire for at least a month and have not yet updated your enrolment details, including any changes to your postal address.

#### How do I enrol?

You can enrol online at [vec.vic.gov.au](http://vec.vic.gov.au)

You can also download an enrolment form from the website.

All enrolment applications must be received by the Victorian Electoral Commission by the close of roll at **4 pm on Wednesday 7 August 2024**.

#### How can I check my State enrolment?

You can check your enrolment details online at [vec.vic.gov.au](http://vec.vic.gov.au) at any time, or call 131 832.

### Council-enrolled voters

#### Am I enrolled to vote?

To be a Council-enrolled voter, you must be:

- 18 years of age or over on Saturday 26 October 2024 and
- not a State-enrolled voter within Campaspe Shire.

New rules mean you are no longer automatically enrolled if you are a non-resident property owner (e.g. a landlord or a business owner that pays rates). If you are a non-resident property owner within Campaspe Shire, you need to apply to enrol if you wish to vote in the Campaspe Shire Council election.

#### Who else can enrol & vote?

You may also apply to enrol if:

- you have purchased a rateable property within Campaspe Shire since the last election but you are not a resident of Campaspe Shire, or
- you are not an Australian citizen and you live in, and pay rates for, a property within Campaspe Shire, or
- you pay rates on a property you occupy within Campaspe Shire and have no other voting entitlement within Campaspe Shire, for example you are a shop tenant and pay rates to the Council for your tenancy, and you have no other voting entitlement within Campaspe Shire, or
- you are a director or company secretary of a corporation within Campaspe Shire that pays rates to Campaspe Shire Council and you have no other voting entitlement within Campaspe Shire.

### How do I apply to be a Council-enrolled voter?

If you meet any of the above criteria and wish to enrol, contact Campaspe Shire Council on 1300 666 535 for a council enrolment form. Council enrolment forms must be received by the Council by the close of roll at **4 pm on Wednesday 7 August 2024**.

#### How can I check if I am Council-enrolled?

You can check your enrolment details by contacting the Council on 1300 666 535.

#### Thinking about standing for election?

To nominate as a candidate for Campaspe Shire Council, you must:

- be an Australian citizen and enrolled on the voters' roll for Campaspe Shire Council and
- be eligible to become a councillor and
- have completed the mandatory candidate training provided by Local Government Victoria before lodging your nomination with the Election Manager.

For further information, visit [vec.vic.gov.au](http://vec.vic.gov.au)

Enrolment closes

**4 pm Wednesday 7 August 2024**


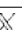

State-enrolled voters can register for free VoterAlert SMS and email reminders at [vec.vic.gov.au](http://vec.vic.gov.au)

[vec.vic.gov.au](http://vec.vic.gov.au) | 131 832

For enquiries in languages other than English:

• عربي (Arabic) 9209 0100 \* ܐܘܨܬܘܢܝܬܐ (Assyrian) 9209 0160 \* ភាសាប៊ុរម៉ា (Burmese) 9209 0161 \* 简体中文 (Mandarin) 9209 0106 \* 廣東話 (Cantonese) 9209 0101  
• Hrvatski (Croatian) 9209 0102 \* دری (Dari) 9209 0193 \* Դինկա (Dinka) 9209 01119 \* Ελληνικά (Greek) 9209 0103 \* ھازارگی (Hazaragi) 9209 0162 \* Italiano (Italian) 9209 0104  
• ភាសាខ្មែរ (Khmer) 9209 0192 \* 한국어 (Korean) 9209 0194 \* македонски (Macedonian) 9209 0105 \* नेपाली (Nepali) 9209 0163 \* فارسی (Persian) 9209 0195 \* ภาษาไทย (Thai) 9209 0164  
• Türkçe (Turkish) 9209 0110 \* اردو (Urdu) 9209 0165 \* Tiếng Việt (Vietnamese) 9209 0111 \* All other non-English languages 9209 0112

Authorised by S. Bluemmel, Electoral Commissioner, 530 Collins Street, Melbourne, Victoria.

@electionsvic   





# TRADE & SERVICES DIRECTORY



**NED BARLOW  
ELECTRICAL  
CONTRACTING**

*Domestic - Commercial - Industrial*  
Servicing: Rushworth, Stanhope,  
Murchison and surrounds  
Phone: 0438 348 110  
(REC: 27429)

**Rushworth Variety**  
(and Rushy Hire)

New trading hours:  
Monday 10am – 4pm  
Tuesday 10am – 3pm  
Wednesday - Closed  
Thursday 10am – 4pm  
Friday 10am – 4pm  
Saturday 10am – 2pm  
Sunday - Closed  
Phone No: 0432 491 176

[www.farriervet.com](http://www.farriervet.com)

Dr. Judith Mulholland  
BSc. BVMS



Phone: 58 522 000  
Mobile: 0408 565 528  
Email: judith@farriervet.com  
P.O. Box 295, Kyabram 3619 Victoria



**RUSHWORTH  
T.V. ANTENNA  
SERVICE**

Est. 1988  
*Servicing Rushworth  
and surrounds*  
Ray Pooley: Ph. 0419 319 296

**DAVID BRANSON  
LANDSCAPE AND  
GARDENING SERVICES**

- Hedgecutting and mowing
- Pruning and handweeding
- Property maintenance
- Residential and commercial

*Prompt and excellent service*  
Contact David: 0456 062 287

**MJ Glew Transport P/L  
Rushworth**  
ABN 70078721561

Water Cartage from 18,000  
litres to 21,000  
Phone Malcolm  
0419 556 239  
Shire of Campaspe No- 0026090

SELF-SERVE

**MORGAN  
FUEL** 24/7

OPEN Colbinabbin

Peter Knobel Rushworth

**Cabinet Maker**

Ph/Fax 5856 1309  
Mob 0419 196 164

*Kitchens – Solid Timber Furniture  
Furniture Design – Bars  
Handcrafted Cabinetry & Furniture  
Wrought Iron Work*

**Workmate Earthworks**



Brett Petersen  
0409 001 239  
Email: work-mate@bigpond.com  
ABN: 75056053431

Bobcat, 10t Excavator, Bulldozer,  
Tandem Tipper, Mini Tipper,  
Grader Attachment, Various Augers,  
Trencher, Vibrating Roller & Slashing.

**Jaq's Bookkeeping  
Services**

I am a registered Bookkeeper/  
BAS agent and I specialise in small  
business bookkeeping.

Payables, receivables through to  
all of your BAS/IAS and SRO  
requirements.

Phone: 0401 186 636



**NorthCentral  
PLUMBING**

- General Plumbing • Drainage • Hot water
- Gasfitting • Sewer blockages • Roofing

Maintenance, Renovations & Construction  
Commercial & Domestic

0413 370 665  
[www.ncplumbing.com.au](http://www.ncplumbing.com.au)




**AUTO GLASS**

- WINDSCREEN REPAIRS
- WINDSCREEN REPLACEMENTS ON ALL MAKES AND MODELS
- TRUCK AND MACHINERY

LOCALLY OWNED AND OPERATED

BEN NORRIS 0429070032  
JESS NORRIS 0400681290

**NC  
NORRIS CREW**

**Septic Tank  
Cleaning**

PROMPT SERVICE

Contact:  
**ANTON DAMEN**  
0429 843 443

# DISTRICT INFORMATION BOARD

## WHAT'S ON AROUND THE TOWNS

### JULY

<b>Sat 20</b>	Rushworth Market, High Street - 8.30am to 1pm
<b>Sun 21</b>	Echuca Country Muisic club - Monthly concert, Tongala Public Hall, Mangan Street
<b>Thu 25</b>	Campaspe Shire Candidate Information Sessions - Colbinabbin, Rushworth, Stanhope, Kyabram, Tongala. Must register to attend
<b>Fri 26</b>	Shearing for kids with Cancer "Corydon" Wanalta
<b>Sat 27</b>	Jigarre Jammin, Girgarre Memorial Hall
<b>Sat 27</b>	Roadside clean up - meet at Motofinish Cafe at 9am - with Wildflower Hunt committee in conjunction with the Waranga Catchment Landcare Collective
<b>Sun 28</b>	Bush clean up - meet at Motofinish Cafe at 10am- with Wildflower Hunt committee in conjunction with the Waranga Catchment Landcare Collective

### AUGUST

<b>Thu 8</b>	<b>Family History Day - full day with guest speakers- Rushworth Library - bookings 5481 2400 by appointment</b>
<b>Sun 11</b>	<b>Stanhope Town Garage Sale from 9am</b>
<b>Thu 15</b>	Researching your family history seminar - Rushworth Library 1pm or 2pm - bookings 5481 2400 by appointment
<b>Sat 17</b>	Rushworth Market, High Street - 8.30am to 1pm

### Meetings & Activities - around the district

- Rushworth SES training: Wednesday evenings at 7pm
- Rushworth CFA: Tuesday nights
- Rushworth Food bank: Wed 9am to 12pm and Friday 9am to 12pm
- #9 Op-Shop: (Summer hours) Mon, Wed and Fri - 9am - 2pm Saturday 9am to 12pm
- Rushworth Community Garden every Wednesday
- Rushworth Community House - Genealogy, every Friday from 9.30 to 12.30pm
- Colbinabbin Library: Wednesdays
- Colbinabbin Community Shed: most Thursdays (old Shire Depot), 10am
- Rushworth Band practice: 7.30pm every Monday night
- Stanhope Walking Group: Tuesdays at 10am at McEwen Place
- Rushworth Market: 3rd Saturday of month - 8.30am to 1pm
- Rushworth ART Depot (RAD) - every Market day - Sat 10am -1pm
- Murchison CFA: Meeting 1st Monday 8pm - training on 3rd Monday 6.30pm
- Rushworth Museum: every Saturday 10am-12 noon, 1<sup>st</sup> and 4<sup>th</sup> Sunday 11am - 1pm
- Rushworth & District Community Bank Board: meets 1st Tuesday monthly, at 6pm
- Rushworth Events Inc: meets bi-monthly, third Wednesday at 7pm
- Community Walking Group: Thurs 8 - 9am meet at front of Waranga Health
- Stanhope Mens Shed: Mon - Wed - Fri 9am - 12 noon
- Murchison Mens Shed: Wednesdays 10am – 3pm
- Rushworth Garden Lovers Club meet 3rd Thursday Month 1.30pm at old Senior Citizen's building
- Friends of the Hostel: Third Monday 1.30pm monthly

**Local clubs or groups who would like to display their event, occasion, community service, entertainment, meeting or opening times, give Waranga News a call or email to be included in our events calendar.**

### EMERGENCY PHONE NUMBERS

**POLICE or FIRE.....Emergency.....000**  
Non-emergency 13 1444

**AMBULANCE.....Emergency.....000**  
Non-emergency...13 3009

SES: (storm & flood).....13 2500

**DOCTORS:**  
Rushworth Medical Centre..... 5856 1329  
Waranga Medical Centre..... 5851 8400  
Stanhope .....5857 0452  
West Goulburn Comm Health....5857 2400  
Murchison Medical Centre.....5826 2575

**HOSPITAL:**  
Waranga Health .....5851 8000

**POLICE:**  
Rushworth.....5856 1000  
Murchison.....5826 2222  
Stanhope.....5857 2507  
Colbinabbin.....5856 1000

**SUPPORT SERVICE:**  
St Vincent de Paul.....0417 597 468

**WARANGA NEWS OFFICE.....5856 1120**

**ADVERTISING DEADLINES**

**NEXT EDITION - 1 AUGUST**

**Display Ads: Friday, 26 July**

**Classifieds: Noon Monday, 29 July**

wnews@iinet.net.au

## Waranga News

COMMUNITY NEWSPAPER ASSOCIATION OF VICTORIA  
the voice of the community

**MEMBER 2024**

**A Voluntary Community Newspaper**

Printed by Maxam Printing, Shepparton  
Published by Mary Jo Fortuna OAM,  
of 3 Phillips Street, Rushworth, 3612 for  
**Waranga News Incorporated**  
(ABN 45 086 403 564)

Office Hours: Mon, Wed & Fri  
9.30am - 5.30pm  
(All day Mon & Tues of production week)  
33 Moora Road, Rushworth.

Postal address: **PO Box 53, Rushworth, 3612**

**E-mail address: wnews@iinet.net.au**

**Website: www.wnews.org.au**

Advertising & Accounts: (03) 5856 1120  
Editor: 0407 561 311

**Annual subscription: Online \$30;**  
**Posted \$65.00 (inc cost of postage)**

**Advertising in the Waranga News supports your business AND your community call 5856 1120 or email wnews@iinet.net.au**



## Project Update

Kerb and channel works are in progress at Campaspe Street, Rochester and are scheduled to be completed within the next fortnight.



**Coming Up** ▶ Council meeting | 6pm Tuesday, 23 July | Echuca Civic Centre

Meetings can be streamed live:  
[campaspe.vic.gov.au/livestreaming](http://campaspe.vic.gov.au/livestreaming)



## Planning Drop-in Visits Extended

Council's planning team has been trialling a new drop-in service on Thursdays between 10am and 1pm, with a member of the planning team available at the Echuca offices for face-to-face general enquiries. The service was set to finish in June but due to its popularity has been extended until the end of the year. Drop in for any general planning enquiries during this time, no bookings are required. As always, Council's planning team can be contacted on 1300 666 535 for verbal or written enquiries and to organise dedicated discussions.

## Employment

### #campaspecareers

- Customer Service Officer – Part Time
- Early Childhood Educator– Various positions
- Event Support Officer – Fixed Term Group Fitness Instructor
- Information Management Coordinator
- Learn To Swim Teacher
- Manager Information and Communications Technology
- Senior Strategic Planner
- Strategic Planner

For all positions currently open and application details, visit Council's website.

## Tenders

### C24031 – Echuca Toilet Cleaning Services

Tenders are invited for the provision of Echuca toilet cleaning services. The scope of works includes cleaning services across 16 Council toilet blocks in Echuca. A copy of the documents can be downloaded from Council's website. Tenders must be submitted via the eProcure portal no later than 2pm (AEDST) on 29 July. Late submissions will not be accepted.

## Now Open

For all projects and applications open, visit [campaspe.vic.gov.au/nowopen](http://campaspe.vic.gov.au/nowopen)



## 2024 Council Elections

### Campaspe Shire Candidate Information Sessions

Council is hosting some kitchen table conversations with Tony Raunic for people who are interested in standing for council. Tony is one of Victoria's leading local government and public law legal advisors and brings the benefit of his own experience as an elected councillor having served two terms on the Shire of Nillumbik as Mayor and Councillor. You must register to attend.

- Wednesday, 24 July: Gunbower, Echuca, Lockington, Rochester
- Thursday, 25 July: Colbinabbin, Rushworth, Stanhope, Kyabram, Tongala

### The Lockington & District Place Based Plan Community Consultation

The Lockington & District Place Based Plan survey has opened for community consultation, and we want to hear from you! Visit the Now Open page to find out how you can be involved and submit your ideas.

### Rochester Flood Study Review

Residents of Rochester and surrounding areas are invited to meet the Flood Study Review team, hear about the flood study and mitigation investigation process and provide relevant information relating to the 2011, 2022 and 2024 floods. Call 1300 666 535 to book a time or drop in during the sessions at the Rochester Recovery Hub, 48 Mackay Street, Rochester.

- Wednesday, 17 July between 9.30am - 12noon or 1 - 4.30pm

### Seniors Program Grants

The 2024 Seniors Program Grants are now open! Not-for-profit community groups, organisations and clubs are encouraged to think creatively and host an event or activity that promotes positive ageing, fosters social connection and participation in community events. Funding of up to \$1,000 is available and applications close Friday, 9 August 2024.

## State Government

### Setting the Standard for Better Recycling at Home Survey

The Department of Energy, Environment and Climate Action (DEECA) is asking for Victorians to have their say on waste and recycling standards that will soon be implemented across Victoria.

The State Government will make the decision on what kerbside bins will be required for each council to provide to the community, as well as what goes in each bin, for example, it is proposed that glass will be banned from your recycle bin.

Before the legislation is finalised, our community can have their say on what they want. It will directly impact the service that council's will provide in the future and the associated cost of providing that service.

Provide your feedback before Wednesday, 14 August on what waste services you'd like to see in Campaspe. Scan the QR code to take the survey today.







**Pumpkin and apples aplenty? Put them together for this warming soup.**

**Ingredients**

- 1 butternut pumpkin (or whatever pumpkin you've been gifted)
  - 2 Granny Smith apples cored, and quartered
  - 2 medium onion quartered
  - 3 garlic cloves leave the skin on
  - 2 tablespoons olive oil
  - salt
  - ¼ teaspoon cayenne (more to taste)
  - 2 cups vegetable stock
  - freshly ground black pepper to taste
- Garnish (optional):
- pomegranate arils
  - pumpkin seeds
  - fresh parsley finely chopped
  - sour cream, yoghurt or creme fraiche

**Instructions**

Preheat the oven to 200°C. Line a large baking sheet with baking paper.

**Roasting the pumpkin**

Cut the pumpkin in half and scoop out the seeds. Slice each half again into quarters. Place the pumpkin quarters and onion on the baking sheet. Drizzle with olive oil, and sprinkle with salt.

Bake for twenty minutes, then add the garlic and apple wedges. Flip the pumpkin and roast for another twenty minutes, or until the flesh is tender.

**Blending**

Carefully scoop the roasted pumpkin flesh (discarding the skin) into a high-speed blender. Add the apple, onion, garlic (remove the skin), cayenne pepper, and vegetable stock. Blend for two minutes, or until silky smooth. If it's too thick, add a bit more stock and blend again. Season with salt and pepper.

Serve with a dollop of sour cream, yoghurt or creme fraiche and a sprinkle of parsley, pumpkin seeds or pomegranate arils.

*Seasonal Kitchen*



**It's a good time to get your native plants in the ground**

The ground is wet and the days short. It's good timing to get your native plants in the ground so the root system has time to establish in readiness for a flush of growth in spring. Our stock supply is moving fast with many species already sold out.

There are still some grasses such as lime green carex which is perfect planted around your dam for biodiversity habitat.

Sheoaks are still available and are great nitrogen fixers as well as wonderful in windbreaks, making a really lovely sound when the wind blows.

*Melaleuca nesophila* is an attractive understorey plant or specimen tree with mauve/purple flowers.

Still available too is *Acacia implexa* also known as lightwood. A fast growing nitrogen fixer with cream flower heads December to March and tolerates both moist and dry well

drained clay soil.

*Eucalyptus citriadora* also known as lemon scented gum with its gorgeous smooth cream coloured trunks and fresh lemon perfume is ready to go. A wonderful specimen tree or planted closely along a driveway. Google 'gum lined driveway Cruden Farm' for inspiration.

There are a few mallee gums such as *Eucalyptus websterian* remaining that are much smaller eucalypts ideal for a larger suburban back yards or paddock trees with a diverse range of bird attracting flowers.

Remember, the best time to plant a tree is yesterday.

*Goulburn Valley Tree Group  
Native Nursery*

*6 Kerferd Street, Tatura  
Currently open Tuesday and Saturday mornings in July.*



**Handy Hints - from Lyn Rumble**

*Hi there,*

*Recycling, Repurposing and Reusing are big on my list to try to do my bit for the environment. In turn that usually means I can save some money in my weekly budget, which is wonderful. I hope that some of these tips can help you too!*

*Have a great week and stay safe.*

*Lyn Rumble*

**\* Is your dog a bit overweight?** I've found a good process to follow – first thing in the morning, prepare the dog's meal/s in two bowls (if applicable) – dry food and wet food separately, weighing the serves for the recommended daily intake for your pooch! Then if your dog has two meals a day, just halve the serves and so half in the morning, and then the rest later in day. It's working for our baby, and she looks so much better for it!

**\* Does your cream cleaner liquid always dry out on the bottle-top?** Mine always does – or did should I say it did! I left a short metal skewer in the top hole. The bottle hole does not clog up any longer!

**\* When you buy a bottle of disinfectant** – pierce a hole in the lid and use that to dispense your liquid instead of taking off the bottle cap completely and pouring. Good quality disinfectant is expensive, so

controlling the amount you use is far more economical than just pouring out an amount (and I usually end up using far more than I intended!).

**\* Do you have a handy peg container?** If you get a clean pot plant holder with a chain to put your clothes pegs in – then you can hang that over your clothesline and it will always be nice and handy. As an added bonus if it rains while out there on the clothesline – the rain will drain straight through the pot, not discolouring your pegs.

**\* To clean badly stained toilet bowls** – make a thin paste of bicarbonate of soda and white vinegar, and scrub the stains well with the paste. For a general toilet bowl clean – pour around the bowl one cup of white vinegar, leave for a couple of hours, and then clean with toilet brush and then flush. Repeat the general clean as needed.



# Dhurringile Estate – life story

Dhurringile Mansion has had four very different occupants under its roof over the years and varying activities occurring on the adjoining farmland. With the shock announcement of Dhurringile Prison closing in August this year, one wonders what will be the fifth life for this important historic place. The property, including the mansion, stables and shearing shed, are listed on the Victorian Heritage Register and described as being ‘of architectural, historical and social significance to the state of Victoria.’ Apart from the historic value, the economic impact across the district is of great concern too.

## A private pastoral property

The first life of the estate was under the ownership of James Winter. He named the property Dhurringile and built the brick, architect-designed, 68 roomed, grand two storey mansion completed by 1877. Over the years Dhurringile had several owners, and there were times when it was unoccupied and neglected. Then a very different use occurred when World War 2 broke out in 1939.

## War-time detention camp

There was an immediate response to intern ‘enemy aliens’, German immigrants who were thought to be a security risk. The government leased the property and surrounded the Mansion with a barbed wire security fence to detain these people and armed guards were in place. The property also housed German Officers and their Batmen, notably the survivors of the Kormoran, the ship that had sunk HMAS Sydney off the coast of Western Australia. There were well organised efforts to escape and tunnelling was successful in a break-out of about twenty men, but they were recaptured within days.

## Rural training farm

Another contrasting phase in the life of Dhurringile Estate came next. In 1947 the Presbyterian Church purchased Dhurringile Mansion and surrounding 120 acres to house young boys from England and Scotland. These boys had been living in Children’s Welfare Homes due to poor family circumstances and the intention of the Rural Training Farm



**Dhurringile Mansion** - (Photo Marg Lock 2019.)

was to improve their future by providing agricultural training that would lead to employment opportunities. By 1960 numbers were dwindling and there were complaints about the standard of conditions and limited training of staff. The Rural Training Farm closed in 1964 and so ended this third chapter in the story of Dhurringile Estate.

## H.M. Prison Dhurringile

The pages of the next chapter of Dhurringile’s story opened in 1965 when Dhurringile was purchased by the Victorian Government as a minimum-security prison known as H. M. Dhurringile Rehabilitation Centre. The men worked in the orchard which was enlarged to fourteen acres and a dairy herd was also managed by the inmates. The buildings desperately needed repairs and renovation at this time, and the work was largely completed by the prisoners. Great difficulty was encountered when replastering walls, as the German Prisoners of War had hidden the sand removed from their tunnels in the wall cavities, and the sand remained damp. Fortunately, the beautiful stained-glass windows remained intact. The gardens were also restored. Many changes occurred over the years and by 2007 prisoners were not always

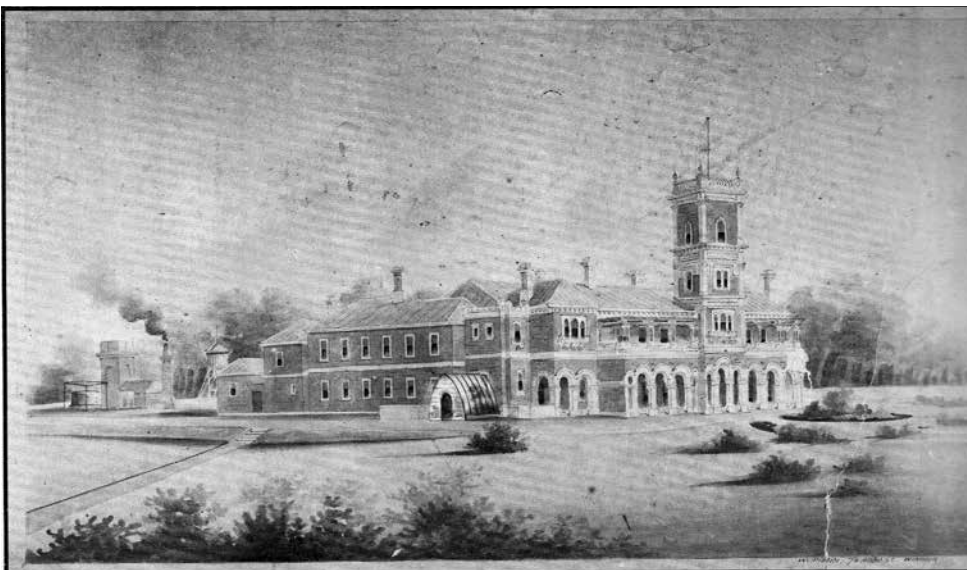
housed in the mansion. Most of the men are now housed in cottage style accommodation, and are supported to become self-sufficient in managing a budget and self-catering to equip them with skills to more easily adjust when released back into society. Many training programs are in place.

## Now what?

Dhurringile Estate has certainly experienced contrasting activities within its boundaries; a private pastoral property, a Prisoner of War Camp, a Church Institution for young boys and currently a government run prison. Starting life as a grand residential property, it endured times of abandonment and neglect, fortification with barbed wire, vandalism, renovation and alteration, and then restoration.

It is of great concern to local communities and those passionate about retaining our heritage that this important place, classified by Heritage Victoria as being ‘... of architectural significance as one of Victoria’s grandest mansions and a notable example of the Victorian Italianate style’ might be at risk of neglect and potential deterioration depending on what the future will hold for Dhurringile Estate.

*Kay Ball,  
Murchison & District Historical Society*



DHURRINGILE MANSION, 1882 - FROM A WATER COLOUR BY W. TIBBITS - (COURTESY OF MISS EILEEN CALLINAN)



**Stained-glass on stairway.**  
(Photo Marg Lock 2019)

# CFNC - Great effort against top team by seniors

## Round 13: Colbo v White Hills

The club welcomed White Hills to the MJ Morgan Oval with some important clashes across the day.

### Football - Seniors

**Colbo 10.7. 67 def White Hills 9.11. 65**

The heavily backed ladder-leading White Hills were somewhat shocked at what happened next. An almost full-strength side for Colbo went in with a free mind.

They managed to keep White Hills goalless in the first quarter which set the game up. A three goal lead was reached in the third quarter but a late flurry of goals from White Hills got them in front by two points at three quarter time, meaning a big last quarter from Colbo was needed.

A free kick on the 50m line in front of the tennis courts, a goal was kicked and that was the lead. A couple of minutes later, was the siren and the final margin was in favour of Colbo in the upset of the season. Well done lads.

**Goal kickers:** Charlie Ryan 3, Clint Shields 2, Alex van Ruiswyk 2, Angus Martin 1, Alex Carr 1, Patrick Taban 1

**Best on ground:** Jude Ryan, Nathan Basile, Logan Fitzgerald, Will Lowe, Rocket (Charlie) Ryan, Connor Aldous

### Reserves

**Colbo 0.0. 0 lt White Hills 25.19. 169**

The poor old Colby Reserves unfortunately went from hero to zero in the space of a week, with school holidays and sick kids ripped the two team to shreds.

Fourteen blokes were all that could be

assembled and White Hills offered an extra three players to even things up and play sixteen each on the field, so we thank them enormously for their help.

### Netball - A Grade

**Colbinabbin 56 def White Hills 48**

After a loss earlier in the season, the girls were pumped to see what they could do against a formidable opposition in White Hills. The girls came out with a great first quarter. The second quarter was possibly their best quarter for the year against strong opposition with a 19 - 9 scoreline.

White Hills came back but was not enough to stop the Hoppers fight back losing the last quarter. The team now sit second on the ladder.

**- Happy 21st to Kasey!**

**Best on court:** Tanzin Myers and Chelsea Imanisani

### A Reserve

**Colbinabbin 46 lt White Hills 50**

A four goal loss to the ladder leaders who beat the girls by 25 last game should make the team happy but it so could have been a win.

Special mention to Kaitlyn Morgan who after dominating in B Grade came on several times in A Reserve and had a huge impact!

**- Happy 21st Dom!**

**Best on court:** Morghan Hughes and Macy McCaig

### B Grade

**Colbinabbin 27 lt White Hills 47**

The B Grade girls came out firing only two down in the first quarter. The girls were unable to keep the game close but never gave

up and held stamina all game.

**Best on court:** Kaitlyn Morgan and Keely Parker

### B Reserve

**Colbo 31 lt White Hills 73**

B Reserve showed up strong for a tough match against White Hills. The girls fought hard showing their determination from the first quarter. Despite the loss they worked hard throughout the game.

**Best players:** Gabby and Alex

**Best on court:** Gabby Perichon and Alex Duke

### 17 and Under

**Colbo 44 lt White Hills 57**

A strong start this week where the first quarter was won comfortably while drawing in the last, not sure what happened in between (we can just glaze over that) but let's just say we didn't come home with the four points! Thanks again to Harriet who stepped up from U15s.

**Best on court:** Amelia Woodfine and Sadie Martin

### 15 and Under

**Colbo 26 lt White Hills 51**

**Best on court:** Ella Patrick

### 13 and Under

**Colbo 37 def White Hills 30**

In the beautiful sunshine, Colbo's young guns came out ready to defend their win against White Hills. Whilst they had their height to their advantage, Colbo's speed and agility made it tough for them to get ahead.

Congratulations on the win everyone.

**Best on court:** Isla Knight and Lola Anderson

# CFNC - A Grade netballers give Huntly a run

## CFNL - Round 14 vs Huntly

### Netball - Under 13

**Colbo 23 lt Huntly 46**

**Best on court:** Chelsea Griffiths and Hailey Johnstone

### Under 15

**Colbo 26 lt Huntly 53**

### Under 17

**Colbo 27 lt Huntly 60**

**Best on court:** Emily McLean

### B Reserve

**Colbo 42 lt Huntly 55**

**Best on court:** Sarah McIntyre and Maisy Pinniger

### B Grade

**Colbo 28 lt Huntly 37**

**Best on court:** Stellar Martin

### A Reserve

**Colbo 53 def Huntly 43**

**Best on court:** Mikayla Palmer

### A Grade

**Colbo 82 def Huntly 35**

**Best on court:** Olivia McEvoy

### Football - U18 - no match

### Reserves

**Colbo 21 lt Huntly 88**

**Best on ground:** Darcy Brown, Tyler Howlett, Samuel Coughlin, Harrison Crilly, Chris Anderson and Harrison Lewis.

### Seniors

**Colbo 47 lt Huntly 55**

**Best on ground:** Nick Knight, Angus Martin, Logan Fitzgerald, William Lowe, Jed Brain and Jai Carn.

## CFNC Goods and Services Auction 2024

(online auction on Facebook)

64 items to bid on.

**Starts: Thursday 18 July - 5pm**

**Closes: Sunday 21 July - 5pm**

### Saturday 20 July

**Round 15 vs Mount Pleasant**

**Football/Netball Club**

**2:30pm**

The Colbinabbin Club invite all the women of the Colbinabbin and Mount Pleasant communities to join us for an afternoon of champagne, nibbles and good company.

Everyone is welcome to attend. Donations, to be raffled on the day, are encouraged and welcomed.

Please message if you would like to donate. \$30 entry - all profits from the day will be donated to the Cancer Wellness Centre.

## Be a joiner!

Would you like to be more involved with your local community?

Many local clubs and organisations are looking for members.

What you can find: good fellowship, chance to meet people, lasting friendships, service to community, new skills, leadership, personal development . . . and more!

## Secretaries and Club Reporters

Please have all reports and contributions in by the Monday of publication week



# Winter Bowls coming to a close

It was a lovely day for bowls, with a full green.

## Thu - 4 July

The winners of the day were Geoff Higgins, from Murchison, Bart Lethlean and his dad Chris, from Tatura with 3 wins 49 shots.

Runners-up were the Kyabram team of Joe, Jack and Dom, 3 wins 44 shots.

## Thu - 11 July

Thirty-nine brave bowlers turned out for bowls on Thursday 11 July for what was a fairly overcast and cool day. It's very lucky there is good heating; hot cuppa's and a nice hot bbq at lunchtime and at the end of the day's play.

It was a reversal of last week's results with the runners-up being Bart, Chris and Higgs with a very nice score of 3 wins 49 shots.

Unfortunately for the runners-up, the team of Jack, Dom and Joe had a ripper score, 3 wins 51 shots to take out the day.

There were still a few fines for wrong biases, so the collection for charity day is growing.

## Thu - 15 August

This will be the last day, Pink Day, will be on 15 August. There will be further information in the coming weeks.



**Right above: Winners on 4 July - Geoff Higgins (Murchison), Bart Lethlean and Chris Lethlean (Tatura).**



**Right: Winners on 11 July - From Kyabram, Dom, Joe and Jack.**

# Rushworth Golf Club members off to Mitiamo

## Friday 5 July

### Mitiamo Open 4ball - (Most prestigious event on the 'cream-cake' tour)

The Mitiamo golf course is set in a beautiful native pine forest and is a real treat to play. In particular the 5 par 3's are very challenging and are spoken about by golfers far and wide.

The hospitality and food is first class and the Open Tournament is always very well attended.

Our regular driver President Garrick likes to be punctual, and he pulled into the Mitiamo carpark a full 90 minutes before hit-off. This didn't worry our boys as they filled in the time tucking into magnificent bacon and egg rolls, followed by cups of tea and homemade biscuits.

The weather conditions were perfect and by hit-off time a record field of 130 of the best golfers in the district had assembled.

Our boys did their best and managed respectable scores.

**- President, Garrick and Dennis Hardie 43 points.**

**- Slim Perry and Tony Geisler 42 points.**

The only glimmer of hope for a win was when Hardie got his name on the card for the longest drive and a nearest the pin.

However, he was quickly overtaken –

probably by the next group through. I know this is not a food column, but as there is no golf success to report I have made a list of their favourite cakes.

**Hardie** – The dark chocolate sponge with peppermint icing

**Perry** – The custard rings and passionfruit sponge.

**Geisler** – The ginger cream cake and chocolate eclairs.

President, Garrick was delighted to discover a plate of cream horns. Apparently, these are puff pastry filled with jam and cream.

A very enjoyable day was completed with a few beers and a yarn with the locals at the Colbinabbin Hotel. How good is golf!

## Sunday 7 July

### Monthly Medal, Stroke and 2nd qualifier for Club Championship

**Winner:** Bill Barlow 75-44 points

**Runner-up:** Dennis Hardie 80-37 points (The runner-up finished a massive seven shots behind Bill!)

**N/P:** Tony Geisler 7/16

Bill Barlow 6/15

Sam Perry 5/14

In golfing circles shooting your age is considered exceptional and arguably rarer than a hole in one. Popular member Bill Barlow achieved this today with a brilliant

75 off the stick. Due to family and farm commitments and two or three overseas trips, Bill has not played much golf this year, but he certainly goes well fresh.

When asked how he did it, was it some extra practice?

Bill replied 'he didn't believe in practice at all, but simply found himself in the middle of the fairway all day, sunk some long putts and his trusty approach putter worked a treat'. All eyes will be on Bill next week to see if he can repeat this form. Let's hope so.

Congratulation Bill.

*Dennis Hardie*



**Bill Barlow, winner on the day!**

## RFNC - Sporting club success

Several local sporting clubs will benefit following successful grant applications in the second round of the Victorian Sporting Club Grants Program.

National Member for Euroa, Annebelle Cleeland praised the sporting clubs for their applications and success being amongst the 400 selected statewide following on from the nine diverse recipients being successful

within the region in round one.

The Rushworth Football Netball Club was one of the four successful clubs in attracting funding for on-field uniforms and equipment in round two.

**Please send in a photo with your story! Make sure it is at least 100mb for printing.**

**'A picture tells a thousand words!'**



# Sports Report

Proudly sponsored by  
**KANANGRA  
ACCOMMODATION**

## NAIDOC celebrated at KDFL matches

### Indigenous Round

NAIDOC Week (7-14 July nationally) celebrates the unyielding spirit of communities and invites all to stand in solidarity, amplifying the voices that have long been silenced. We recognise and celebrate the contribution Aboriginal and Torres Strait Islander people make towards our game and our communities.

AFLGM, KDL Community,  
KDL Football, KDL Netball

Rushworth seniors standing together during the speech before shaking hands with the opposition preceding their game against Violet Town on Saturday 13 July.



## RFNC - Round 11 vs Violet Town

### Football - Under 15's

#### Rushy 0 lt Violet Town 193

It was a hard day on the ground this week for the junior boys taking on the top side Violet Town. Despite the score, the boys embraced the challenge and worked together despite their size.

If the boys continue to run out with their heads held high and put in the effort and maintain four quarters, they will definitely be able to match it with the top sides.

**1st incentives:** Brodie - he was given a tough opponent to play against a great job.

**2nd incentive:** William for pressure and

intensity all day.

**3rd incentive:** Heath, who used his voice to help out the boys in the backline.

**The Umpires Award:** Cooper. He tried hard all day and kept his head held high.

### Reserves

**Rushworth 42 lt V/Town 193**

## Inspirational win by senior Tigers

Seniors - Rushworth 187 def Violet Town 28



The seniors played an inspiring game of football in their 159 point victory against Violet Town.



**KANANGRA  
ACCOMMODATION**

Colbinabbin Bed and Breakfast  
53 Mitchell Street Colbinabbin

Phone: 0408 602 841  
Email: julie.prince59@bigpond.com



# RFNC - Junior netballers take it to Violet Town

## Netball

11/U

Rushworth 8 def Violet Town 6

Incentives: Gypsy, Lucy and Taylah

13/U - n/a

15/U

Rushworth 33 def Violet Town 15

Incentives: Makaylah, Lailah and Keileigh

17/U

Rushworth 41 def Violet Town 22

A great start in the first quarter. There was a lull in the second quarter.

Defenders came up against some taller opponents but took opportunities when they arose. There was fast movement down the court and great teamwork by all. Well done with another win.

Incentives: Maddy, Jackie and Ella

## C Grade

Rushworth 39 def Violet Town 31

C Grade came out strong and eager to win their first game of the season which they pulled through for a 39-31 win.

The girls backed each other throughout the whole game. Sarah, Tryra and Millie N kept a competitive defensive end helping to move the ball down the court to the goalers Emma and Millie S who were consistent with their shots. Well done all on a great game.

Incentives: Brittney, Sarah LR and Millie S.

## B Grade

Rushworth 27 It Violet Town 37

B Grade had another exciting game with the girls turning it on and putting on a show. Montana was once again up to her usual tricks taking stunning intercepts and getting rebound after rebound.

Hailey Beiber ran hard through the middle and was stopping and propping like a pro, she was as always, an utter delight to watch.

After playing a full game in 17's Mads came through for us as always proving she really can play anywhere, running the centre and causing upsets and turnovers galore. A really exciting young team to watch and hopefully really establish itself in the coming years!



A Grade played like champions but Violet Town were too good on the day.

## A Grade

Rushworth 24 It Violet Town 59

A Grade 'old ducks' came out firing on all cylinders against a slick ensemble. Beth Parker turned up the heat and provided good pressure all over the court. Her best on court performance carried through the night where she was spotted snatching the microphone for karaoke.

Kat was moving around that ring like she owned it with her opponent even deeming her a "show pony". It's not her fault she was born to dominate!

Kayla Shep ran herself all over the court and had her finger tips to nearly every pass. Her passion and determination is always admirable.

Big thanks to everyone who helped out with Ladies Day; it's so nice to acknowledge the women in our club who are constantly working behind the scenes and without them we would be lost.



## Social Calendar

10 August

Round 15

2004 20-Year A Grade and Seniors Reunion

2014 10-Year

Reserves Reunion

and Past Players Day



# Shaun Young - 250 RFNC games

Shaun is a local who came up through the junior ranks and remains a valued member of the Rushworth club after notching up 250 games.

In recent years Shaun has chipped in behind the scenes as one of the clubs Vice President's and football committee member, along with co-coaching the junior football for the past three years.

A much loved team mate and true leader by example on and off the field, Shaun is a previous Under 18 and senior captain and is again the captain of their senior team in a pivotal year for the club.

"The epitome of an outstanding club man in an era where loyalty means less and less, Shaun has stayed the course where many people have gone.

Your commitment and support towards myself, the playing group and the overall club is nothing short of outstanding.

You should be extremely proud of your achievements. You are a tough, uncompromising and competitive player who gives an ultimate effort week in, week out. To be voted in by his peers with an overwhelming majority as captain this year is testament to the person he is. It's an honour to be your coach."

*Mark Wheatley,  
RFNC Senior Coach*



Shaun leads the boys through his 250 game banner.



Tigers Big Win - the third quarter score showed their dedication on Saturday. (See page 34)




**Lipshut**LAW



*Geoffrey Lipshut*

### Accepting Instructions in:

- Wills & Estates
- Powers of Attorney both Enduring & Medical
- Property & Conveyancing
- Notary Public
- General Legal Advice

Over 40 years experience  
Personal Service  
Reasonable Fees

Now at 6 Francis Street, Tatura  
Mailing Box 211, Tatura, Victoria 3616  
Office: (03) 5824 1503 Mobile anytime: 0417 134 929  
Email: geoff@lipshutlaw.com.au



Tatura  
Kitchens

57-59 Hogan Street  
Tatura 3616  
[taturakitchens.com.au](http://taturakitchens.com.au)  
03 4811 6888

- New Kitchens
  - Bathroom Vanities
  - Laundrys • Wardrobes
  - Outdoor Kitchens
- And All Your Cabinetry Needs**